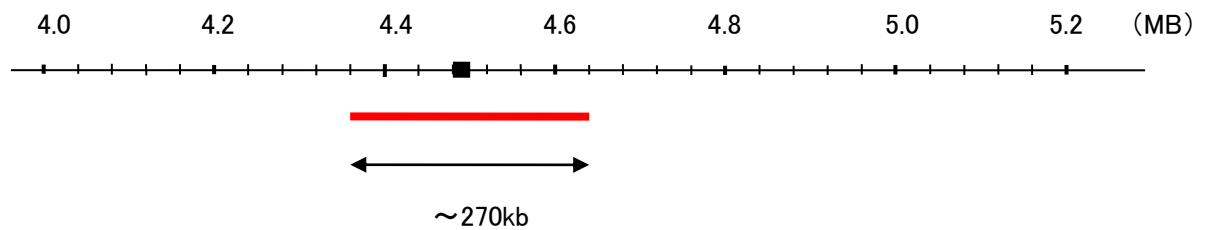


Probe FGF23/CEN12p Dual Color FISH Probe
Product No. GC001

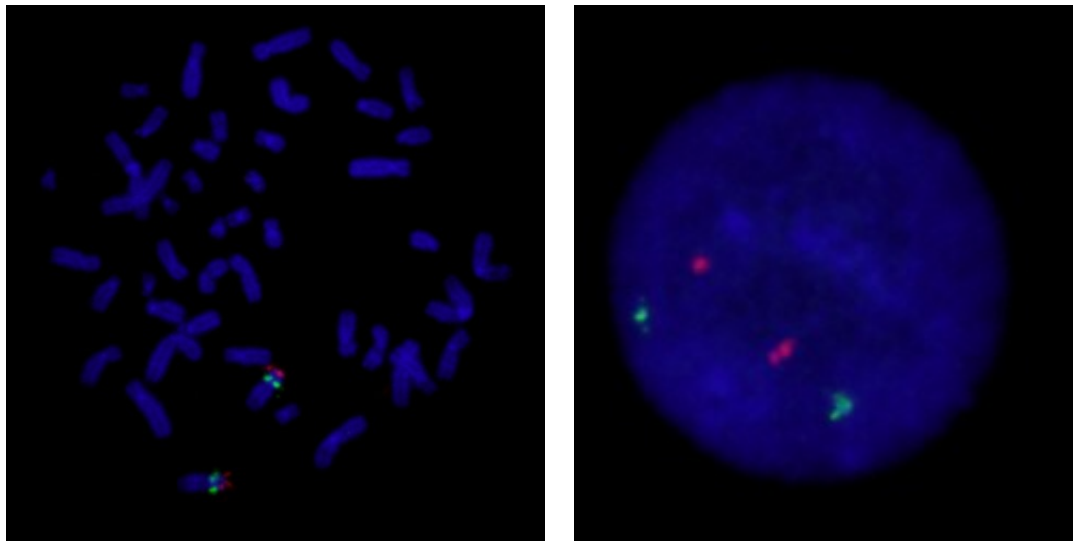
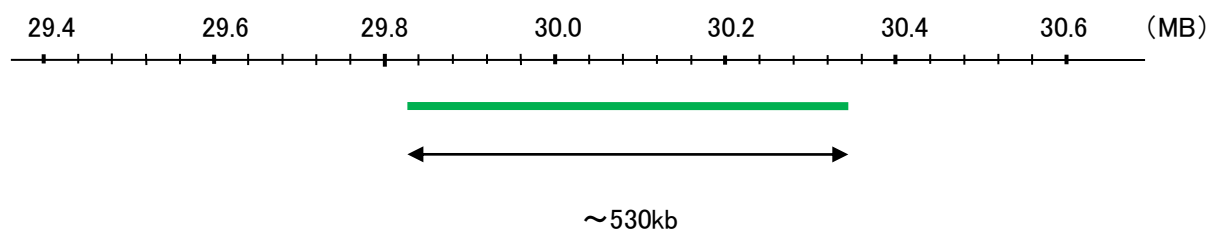
FGF23
Probe Size Approximately 270kb
Fluorophore TexRed
Location 12p13
Also known as ADHR; FGFN; HYPF; HPDR2; PHPTC

CEN12p
Probe Size Approximately 530kb
Fluorophore FITC
Location 12p11.22

FGF23



CEN12p



Representative images of normal human cell (lymphocyte) stain with the dual color FISH probe. The left image is chromosomes at metaphase, and the right image is an interphase nucleus.