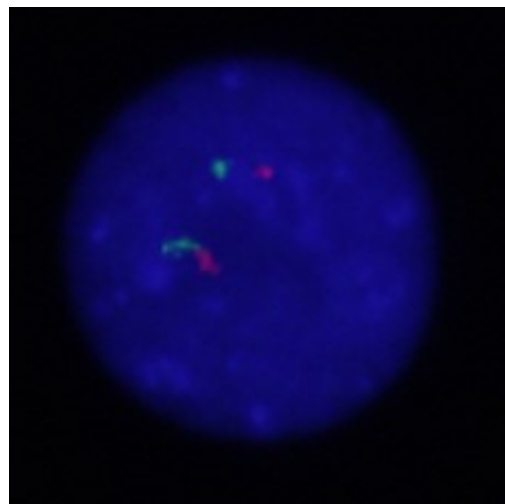
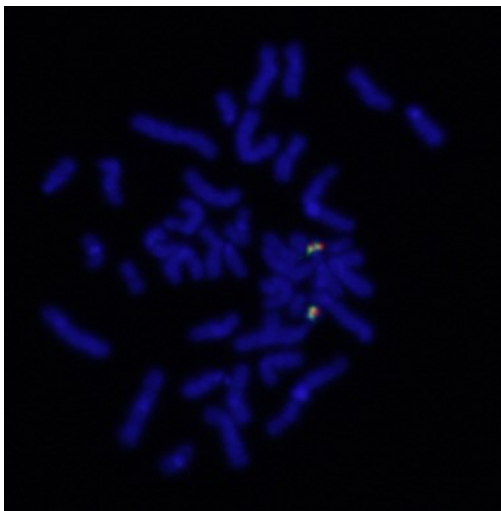
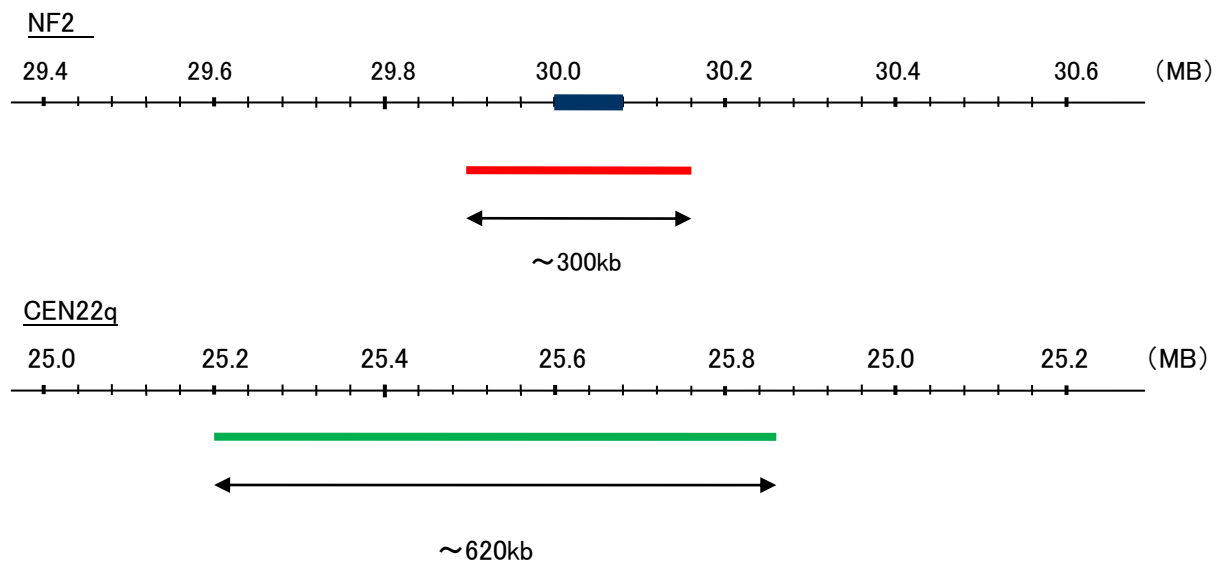


Probe NF2/CEN22q Dual Color FISH Probe
Product No. GC003

NF2
Probe Size Approximately 300kb
Fluorophore TexRed
Location 22q12.2
Also known as ACN; SCH; BANF

CEN22q
Probe Size Approximately 620kb
Fluorophore FITC
Location 22q11.22



Representative images of normal human cell (lymphocyte) stain with the dual color FISH probe. The left image is chromosomes at metaphase, and the right image is an interphase nucleus.