

Probe EGFR/CEN7q Dual Color FISH Probe  
Probe No. GC005

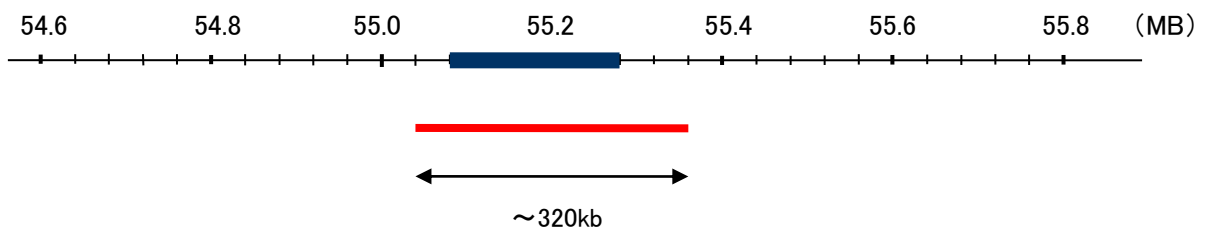
**EGFR**

Probe Size Approximately 320kb  
Fluorophore TexRed  
Location 7p12  
Also known as ERBB; HER1; mENA; ERBB1; PIG61; NISBD2

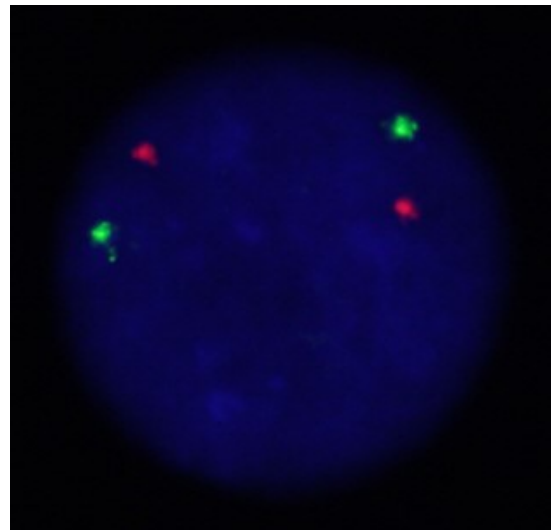
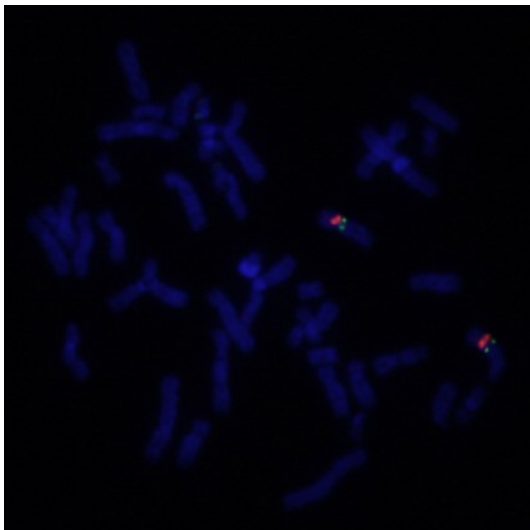
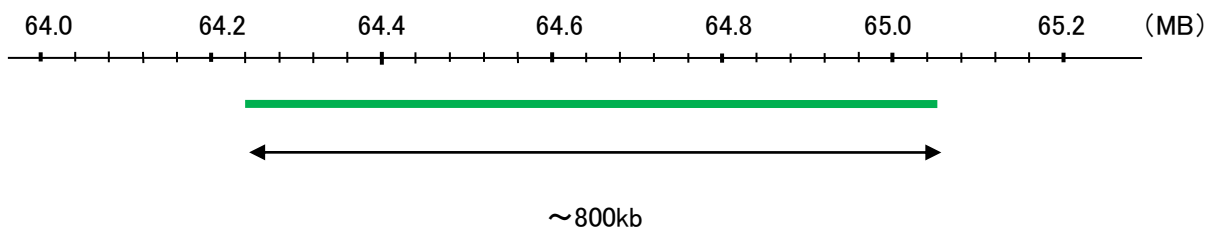
**CEN7q**

Probe Size Approximately 800kb  
Fluorophore FITC  
Location 7q11.21

EGFR



CEN7q



Representative images of normal human cell (lymphocyte) stain with the dual color FISH probe. The left image is chromosomes at metaphase, and the right image is an interphase nucleus.