

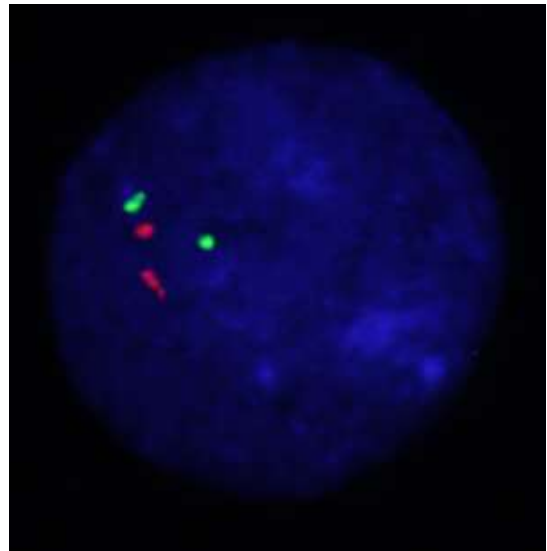
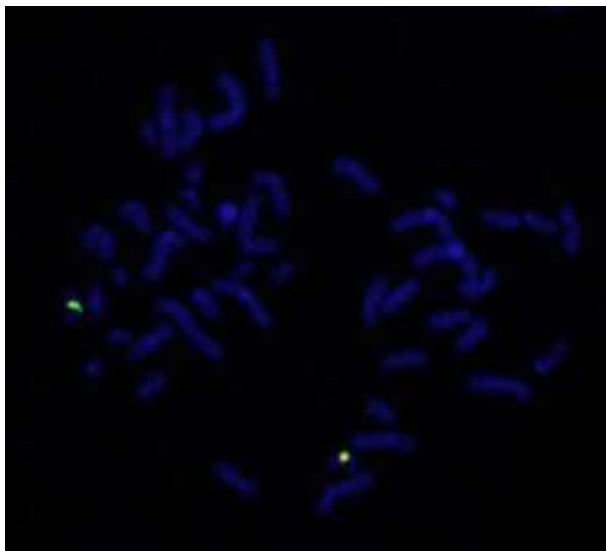
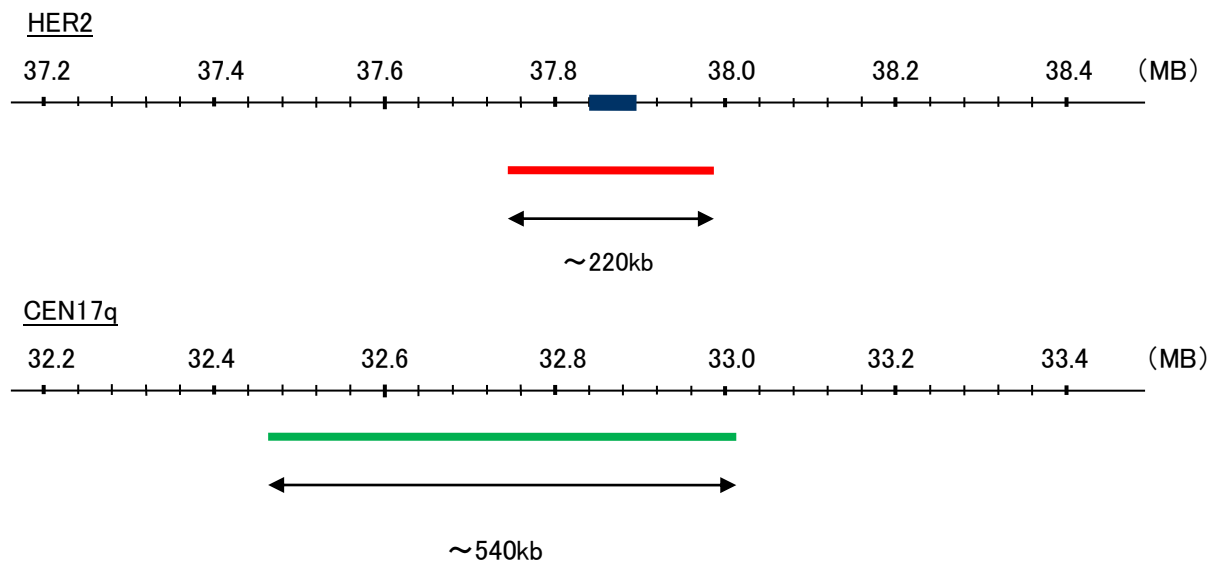
Probe HER2/CEN17q Dual Color FISH Probe
Product No. GC006

HER2

Probe Size Approximately 220kb
Fluorophore TexRed
Location 17q12
Also known as NEU; NGL; HER2; TKR1; CD340; ERBB2; MLN 19; HER-2/neu

CEN17q

Probe Size Approximately 540kb
Fluorophore FITC
Location 17q12



Representative images of normal human cell (lymphocyte) stain with the dual color FISH probe. The left image is chromosomes at metaphase, and the right image is an interphase nucleus.