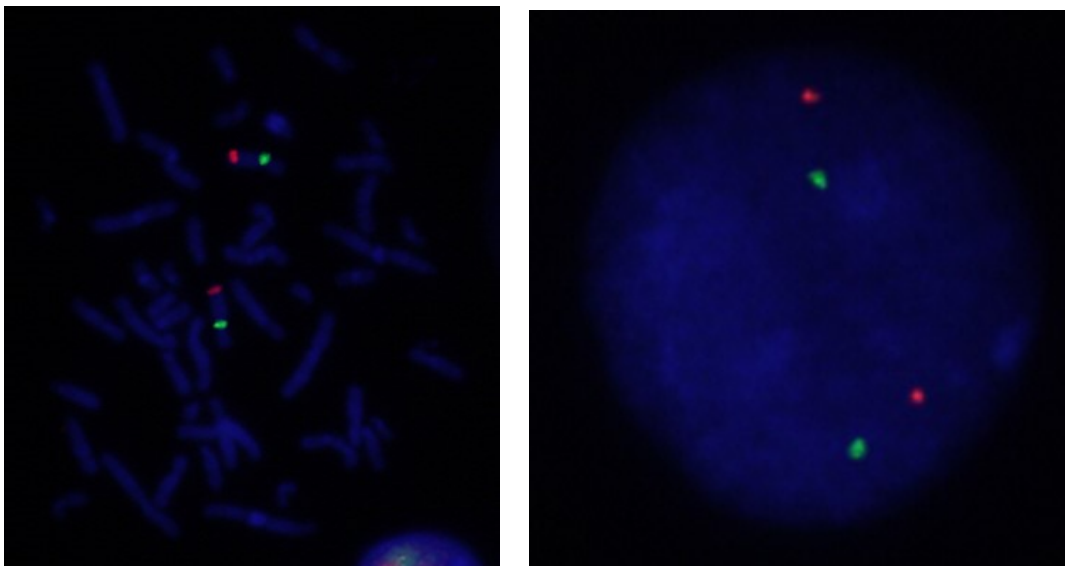
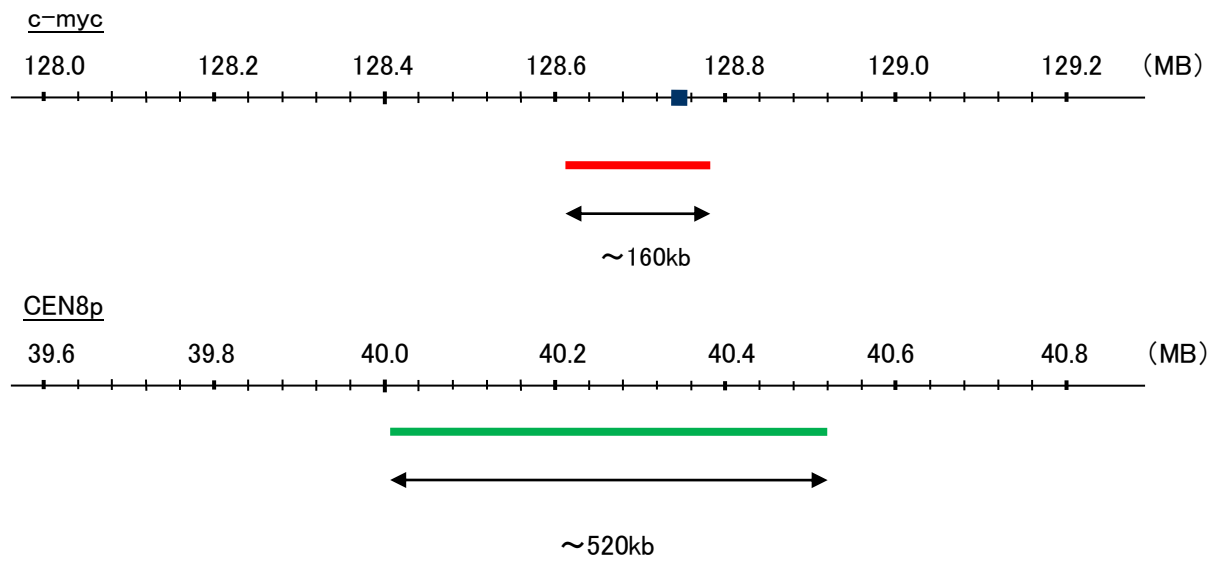


Probe c-myc/CEN8p Dual Color FISH Probe
Product No. GC009A

c-myc
Probe Size Approximately 160kb
Fluorophore TexRed
Location 8q24.12-q24.13
Also known as MRTL; MYCC; MYC; bHLHe39

CEN8p
Probe Size Approximately 520kb
Fluorophore FITC
Location 8p11.21



Representative images of normal human cell (lymphocyte) stain with the dual color FISH probe. The left image is chromosomes at metaphase, and the right image is an interphase nucleus.