

Probe CCND1/CEN11p Dual Color FISH Probe
Product No. GC010A

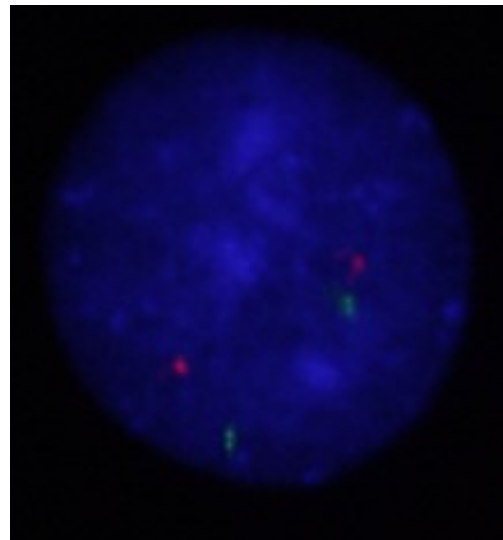
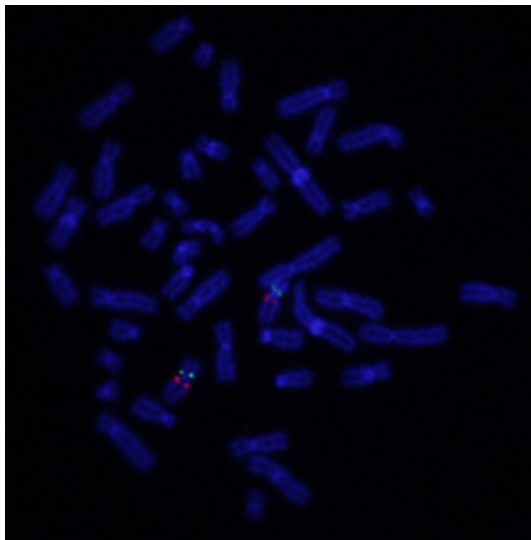
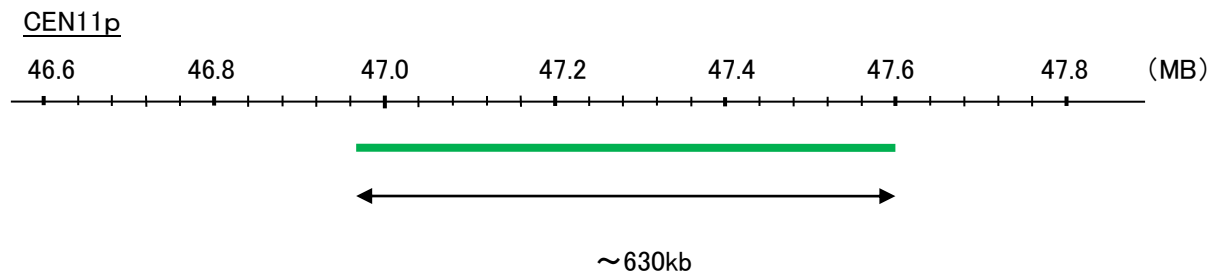
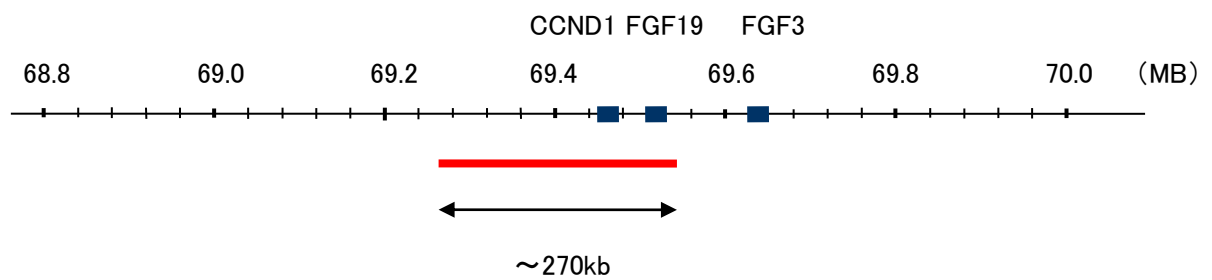
CCND1

Probe Size Approximately 270kb
Fluorophore TexRed
Location 11q13
Also known as BCL1; PRAD1; U21B31; D11S287E

CEN11p

Probe Size Approximately 630kb
Fluorophore FITC
Location 11p11.12

CCND1



Representative images of normal human cell (lymphocyte) stain with the dual color FISH probe. The left image is chromosomes at metaphase, and the right image is an interphase nucleus.