

Probe TYMS/CEN18q Dual Color FISH Probe  
Product No. GC012

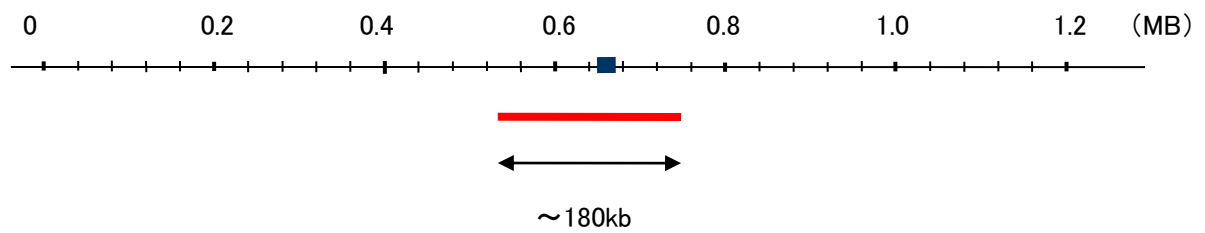
**TYMS**

Probe Size Approximately 180kb  
Fluorophore TexRed  
Location 18p11.32  
Also known as TS; TMS; HST422

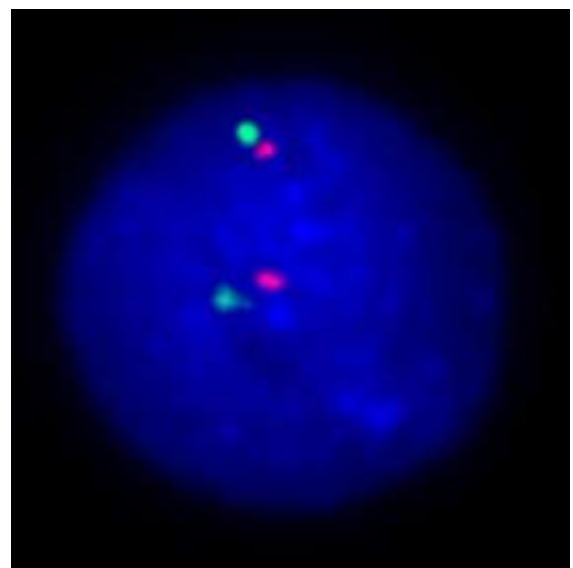
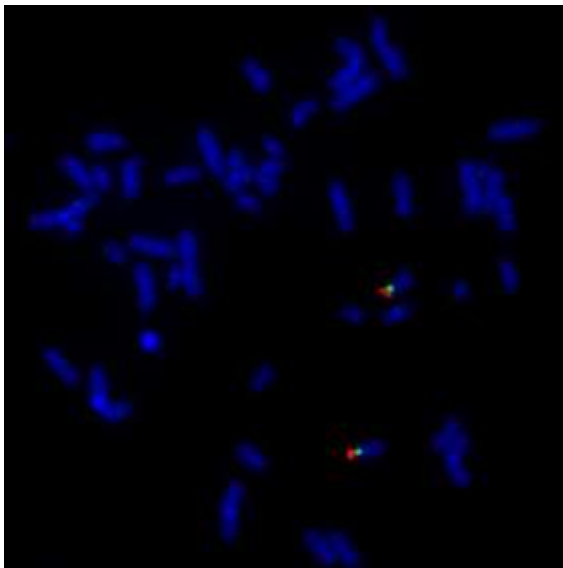
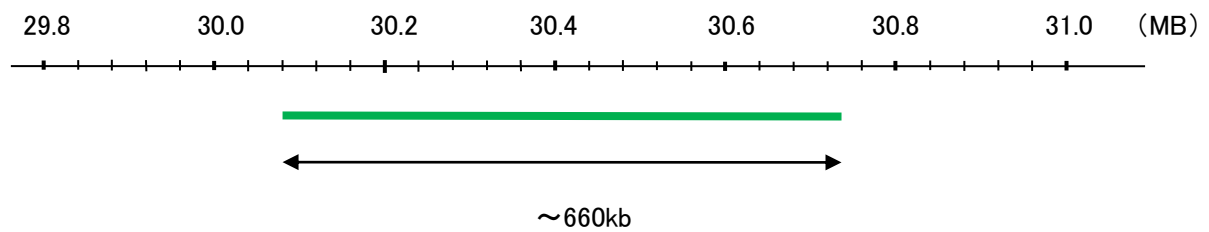
**CEN18q**

Probe Size Approximately 660kb  
Fluorophore FITC  
Location 18q12.1

TYMS



CEN18q



Representative images of normal human cell (lymphocyte) stain with the dual color FISH probe. The left image is chromosomes at metaphase, and the right image is an interphase nucleus.