

Probe TYMS/CEN18q Dual Color FISH Probe
Product No. GC012

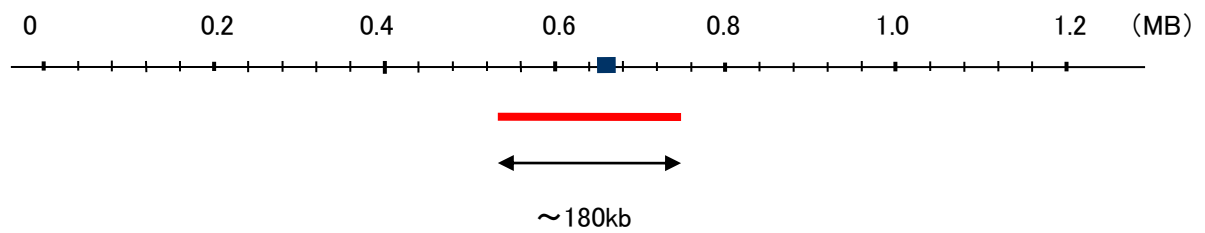
TYMS

Probe Size Approximately 180kb
Fluorophore TexRed
Location 18p11.32
Also known as TS; TMS; HST422

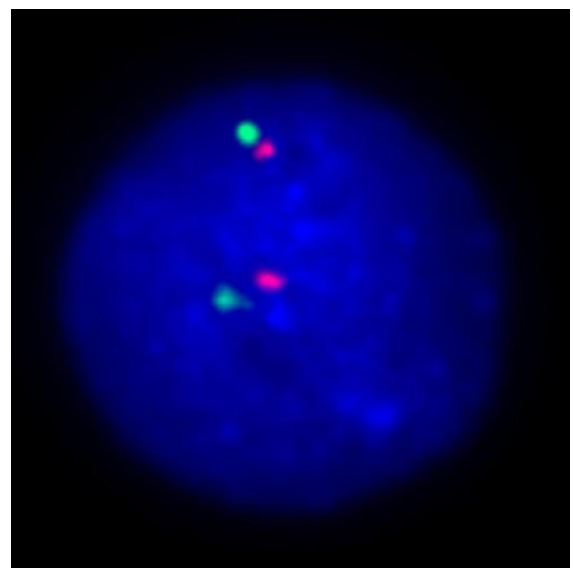
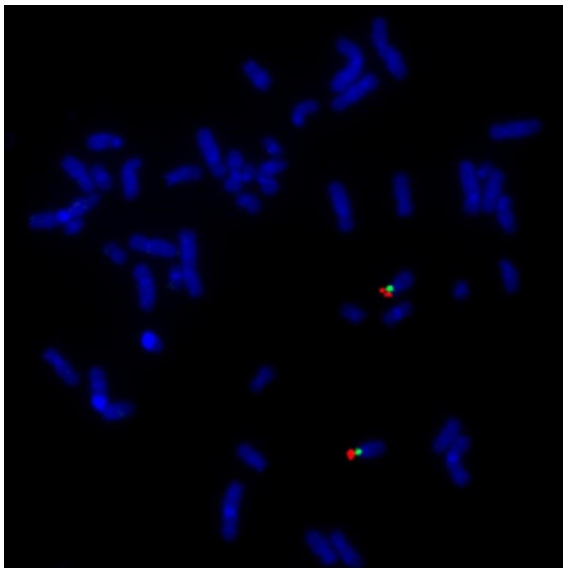
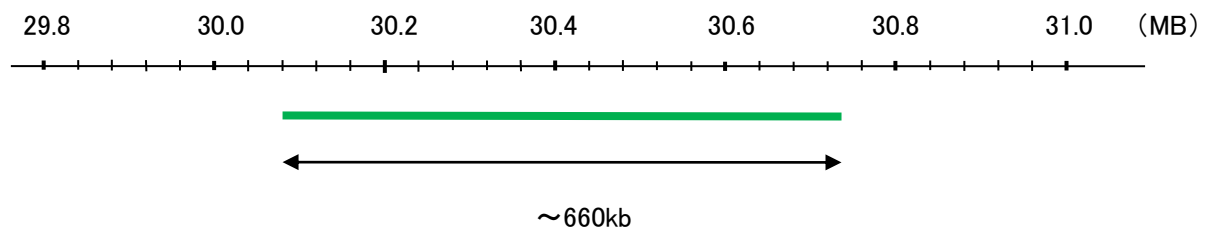
CEN18q

Probe Size Approximately 660kb
Fluorophore FITC
Location 18q11.2

TYMS



CEN18q



Representative images of normal human cell (lymphocyte) stain with the dual color FISH probe. The left image is chromosomes at metaphase, and the right image is an interphase nucleus.