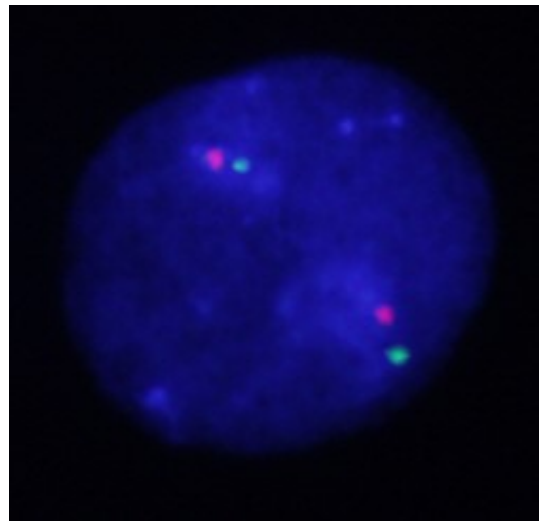
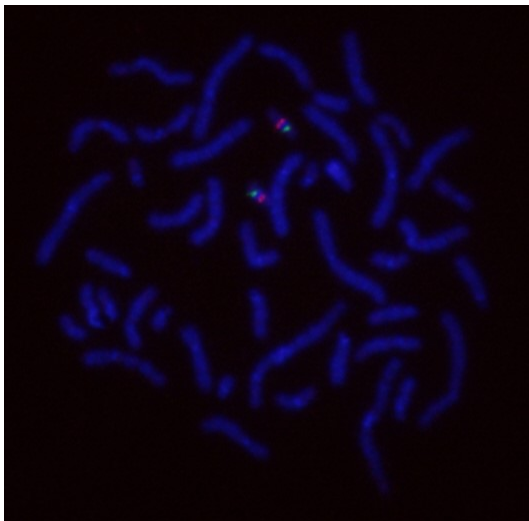
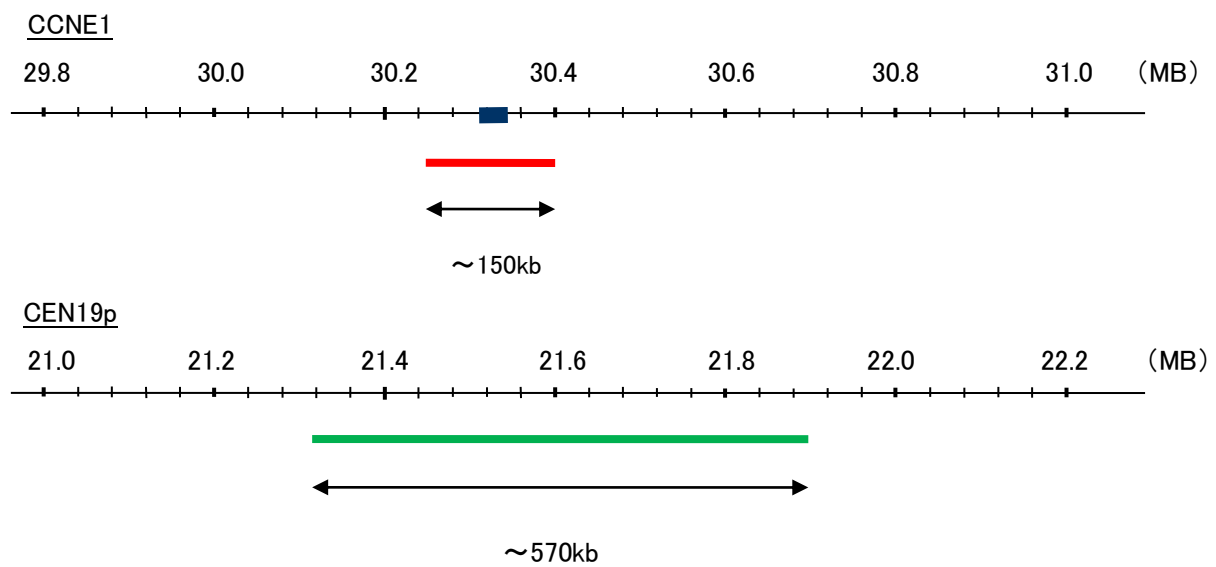


Probe CCNE1/CEN19p FISH Probe
Product No. GC013

CCNE1
Probe Size Approximately 150kb
Fluorophore TexRed
Location 19q12
Also known as CCNE; pCCNE1; cyclin E1

CEN19p
Probe Size Approximately 570kb
Fluorophore FITC
Location 19p13.11



Representative images of normal human cell (lymphocyte) stain with the dual color FISH probe. The left image is chromosomes at metaphase, and the right image is an interphase nucleus.