

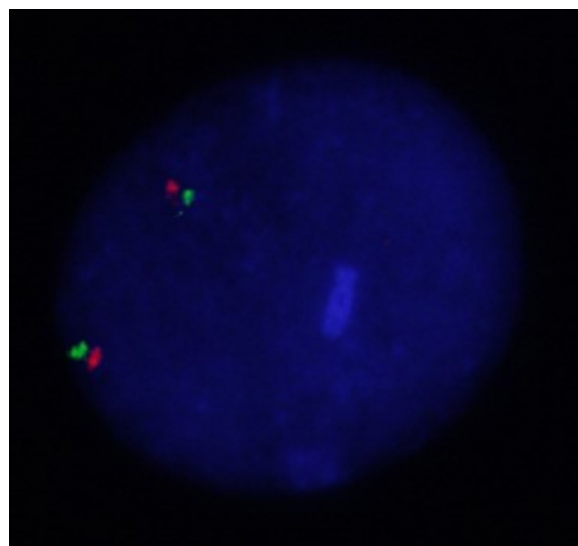
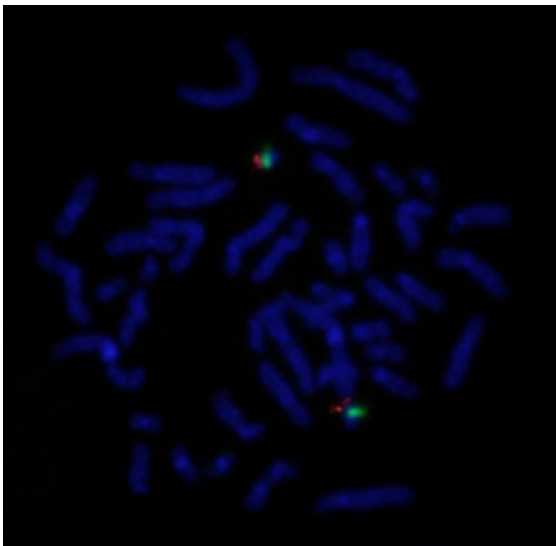
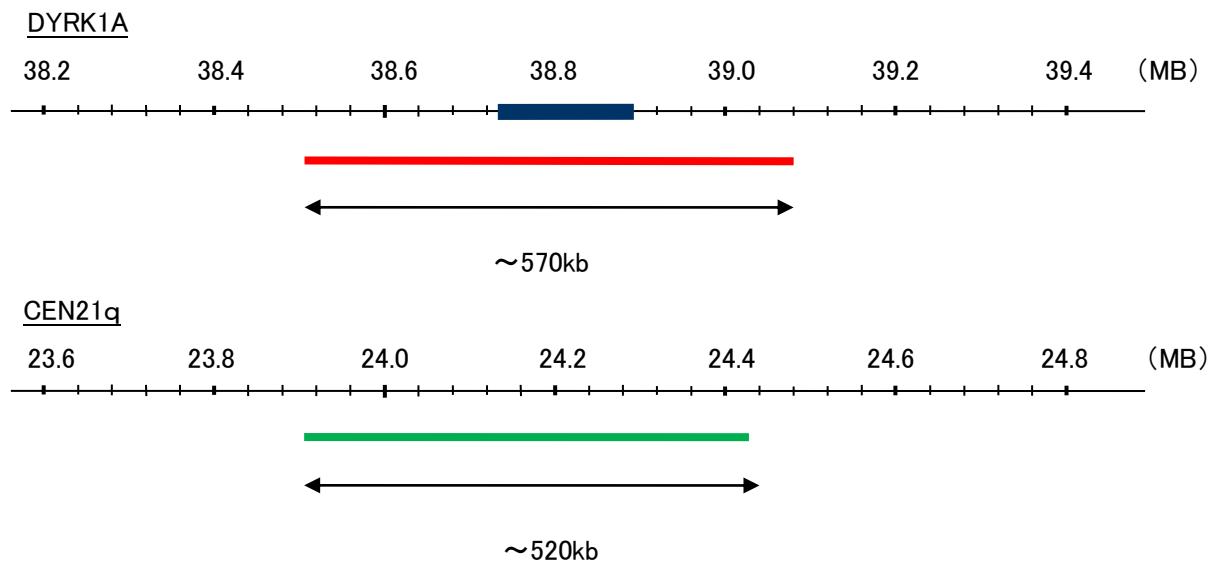
Probe                   DYRK1A(Down syndrome critical region)/CEN21q Dual Color FISH Probe  
Product No.           GC015

**DYRK1A**

Probe Size            Approximately 570kb  
Fluorophore          TexRed  
Location              21q22.13  
Also known as        MNB; DYRK; HP86; MNBH; MRD7; DYRK1

**CEN21q**

Probe Size            Approximately 520kb  
Fluorophore          FITC  
Location              21q11.2



Representative images of normal human cell (lymphocyte) stain with the dual color FISH probe. The left image is chromosomes at metaphase, and the right image is an interphase nucleus.