

Probe KRAS/CEN12q Dual Color FISH Probe  
Product No. GC017

**KRAS**

Probe Size Approximately 250kb

Fluorophore TexRed

Location 12p12

Also known as NS; NS3; CFC2; RALD; KRAS1; KRAS2; RASK2; KI-RAS; C-K-RAS; K-RAS2A; K-RAS2B; K-RAS4A; K-RAS4B

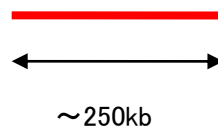
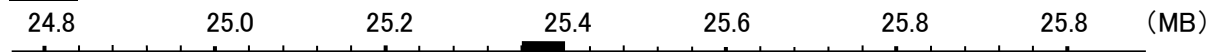
**CEN12q**

Probe Size Approximately 580kb

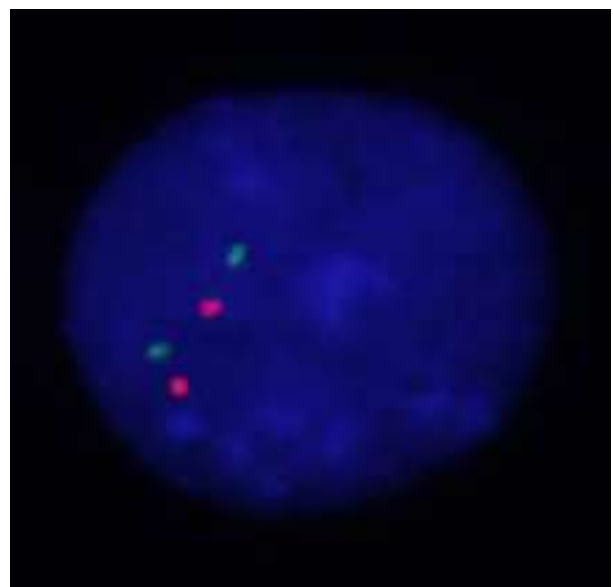
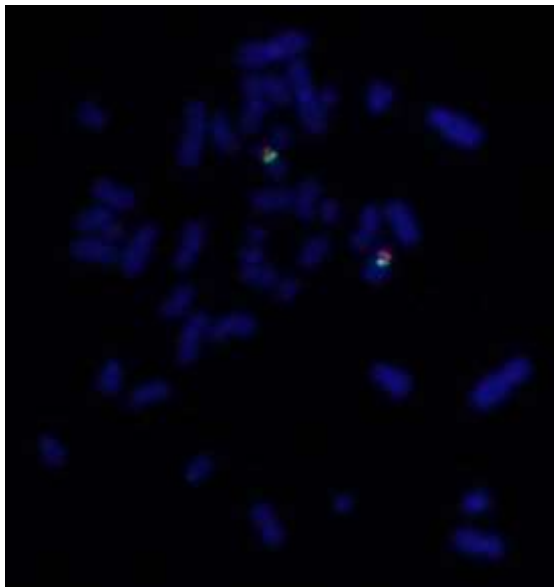
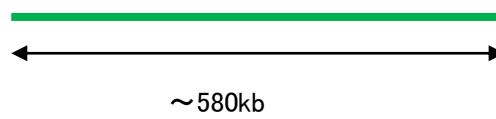
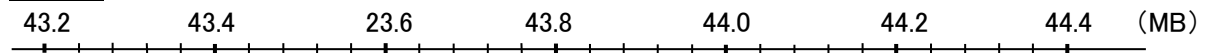
Fluorophore FITC

Location 12q12

KRAS



CEN12q



Representative images of normal human cell (lymphocyte) stain with the dual color FISH probe. The left image is chromosomes at metaphase, and the right image is an interphase nucleus.