

Probe FGFR2/CEN10p Dual Color FISH Probe
Product No. GC018

FGFR2

Probe Size Approximately 330kb

Fluorophore TexRed

Location 10q26

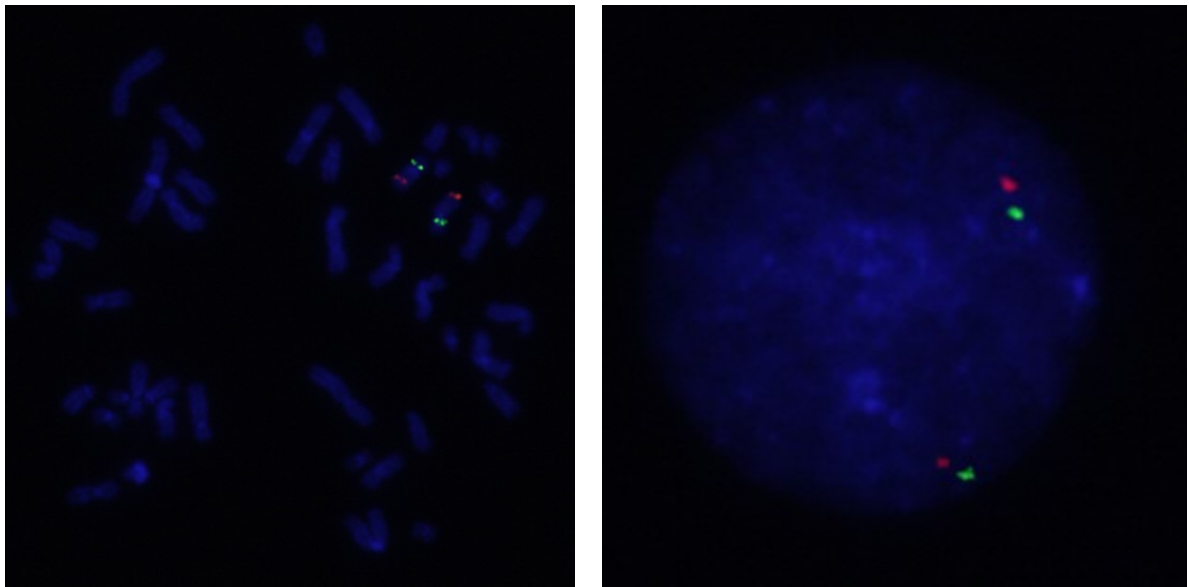
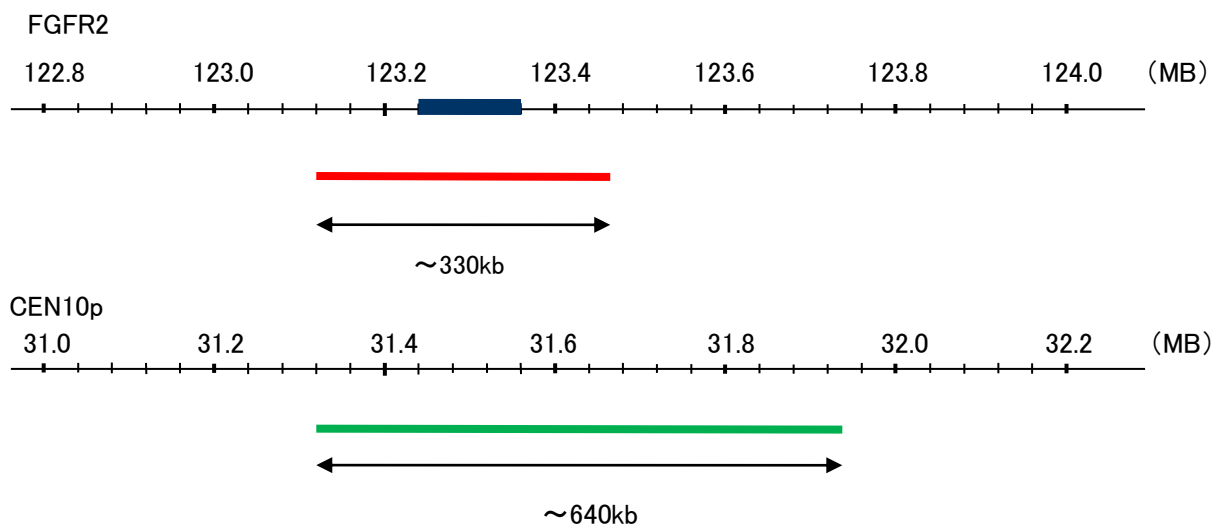
Also known as BEK; JWS; BBDS; CEK3; CFD1; ECT1; KGFR; TK14; TK25; BFR-1; CD332; K-SAM

CEN10p

Probe Size Approximately 640kb

Fluorophore FITC

Location 10p11.22



Representative images of normal human cell (lymphocyte) stain with the dual color FISH probe. The left image is chromosomes at metaphase, and the right image is an interphase nucleus.