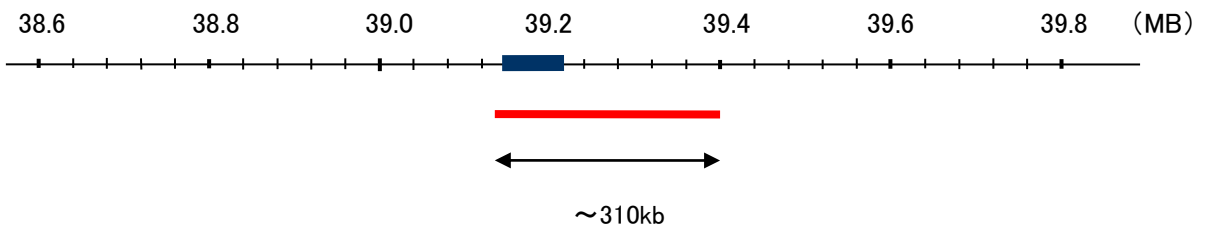


Probe ACTN4/CEN19p FISH Probe
Product No. GC022

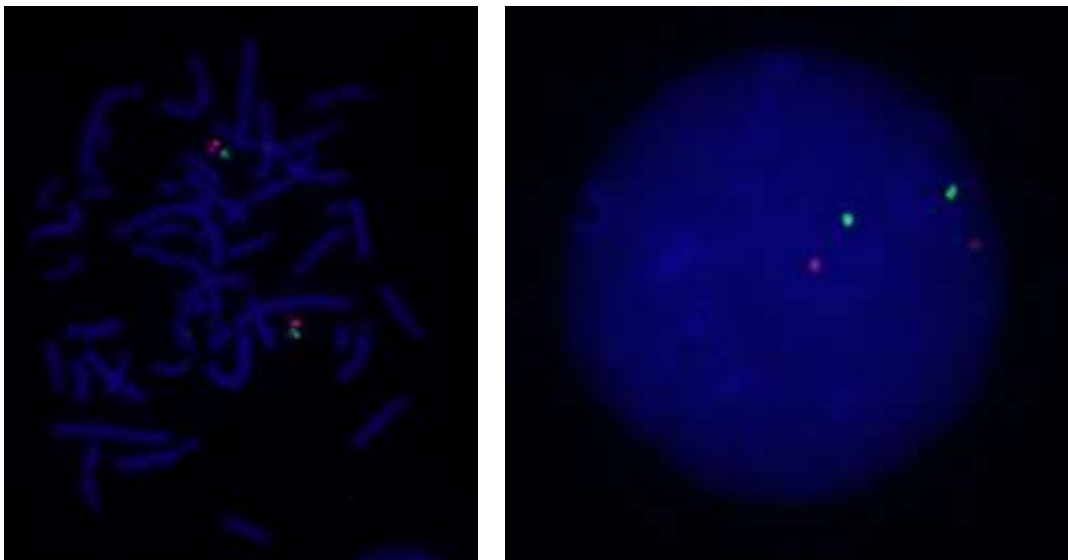
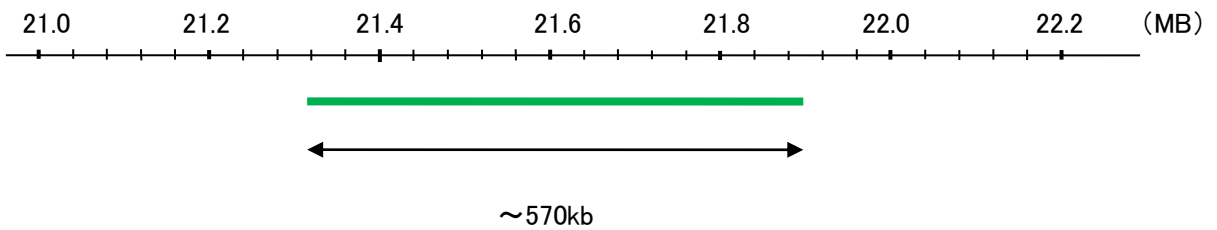
ACTN4
Probe Size Approximately 310kb
Fluorophore TexRed
Location 19q13
Also known as FSGS; FSGS1; ACTININ-4

CEN19p
Probe Size Apporoximately 570kb
Fluorophore FITC
Location 19p12

ACTN4



CEN19p



Representative images of normal human cell (lymphocyte) stain with the dual color FISH probe. The left image is chromosomes at metaphase, and the right image is an interphase nucleus.