

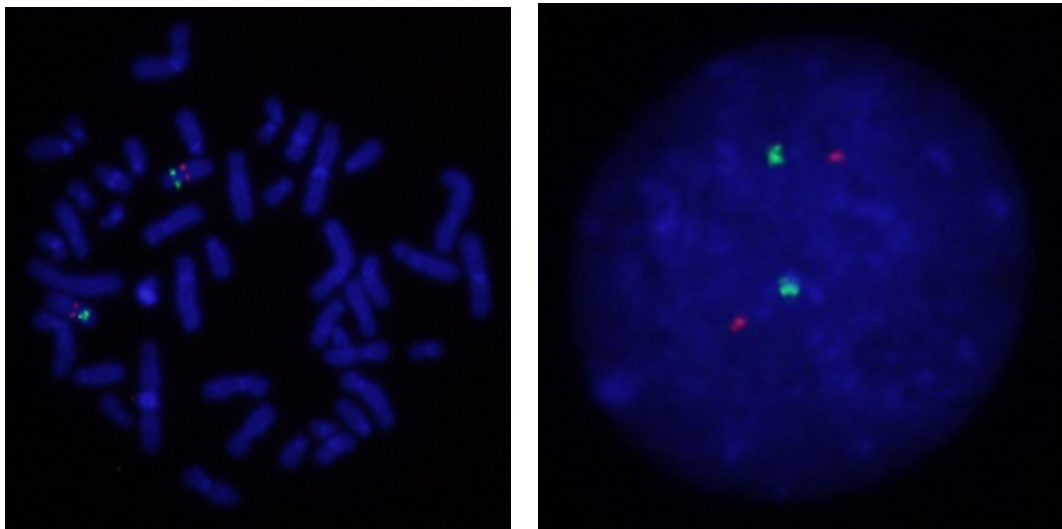
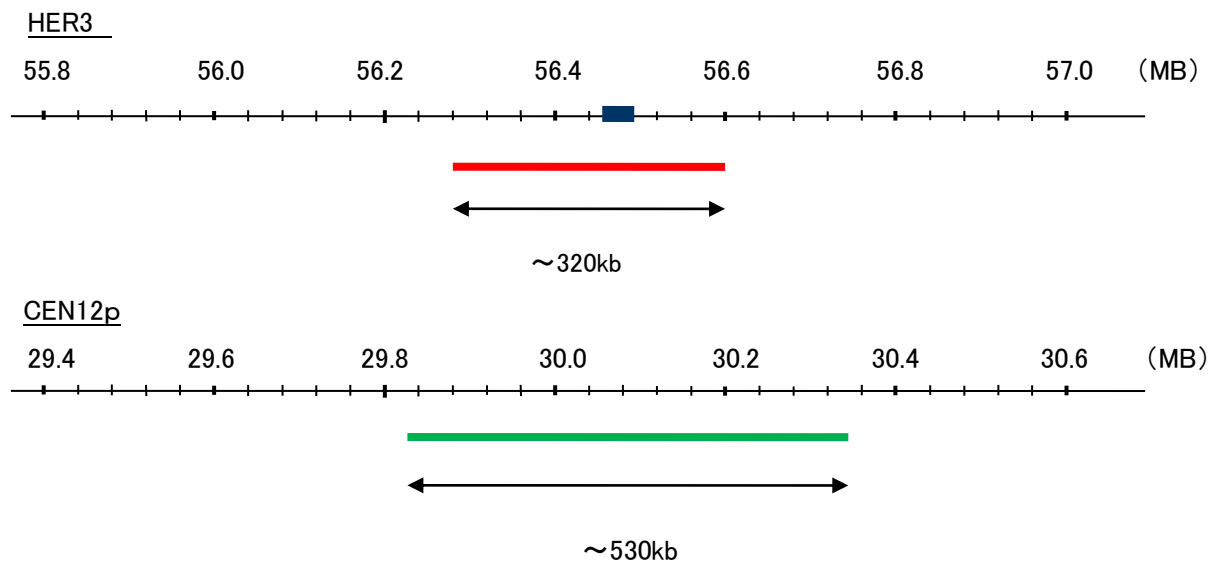
Probe HER3/GEN12p Dual Color FISH Probe  
Product No. GC023

**HER3**

Probe Size Approximately 320kb  
Fluorophore TexRed  
Location 12q13  
Also known as ERBB3; LCCS2; ErbB-3; c-erbB3; erbB3-S; MDA-BF-1; c-erbB-3; p180-ErbB3; p45-sErbB3; p85-sErbB3

**GEN12p**

Probe Size Approximately 530kb  
Fluorophore FITC  
Location 12p11.22



Representative images of normal human cell (lymphocyte) stain with the dual color FISH probe. The left image is chromosomes at metaphase, and the right image is an interphase nucleus.