

Probe MMP2/CEN16q Dual Color FISH Probe
Product No. GC026

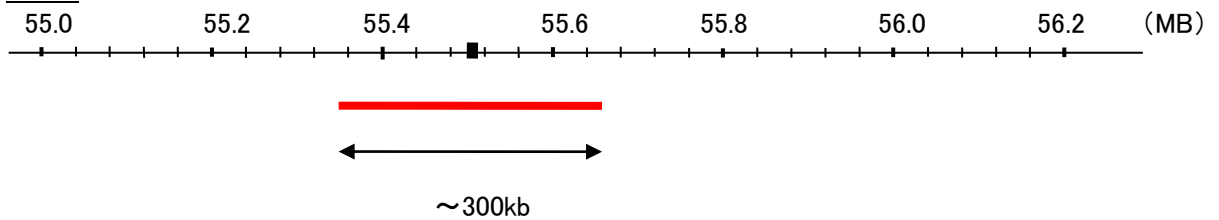
MMP2

Probe Size Approximately 300kb
Fluorophore TexRed
Location 16q12.1
Also known as CLG4; MONA; CLG4A; MMP-2; TBE-1; MMP-II

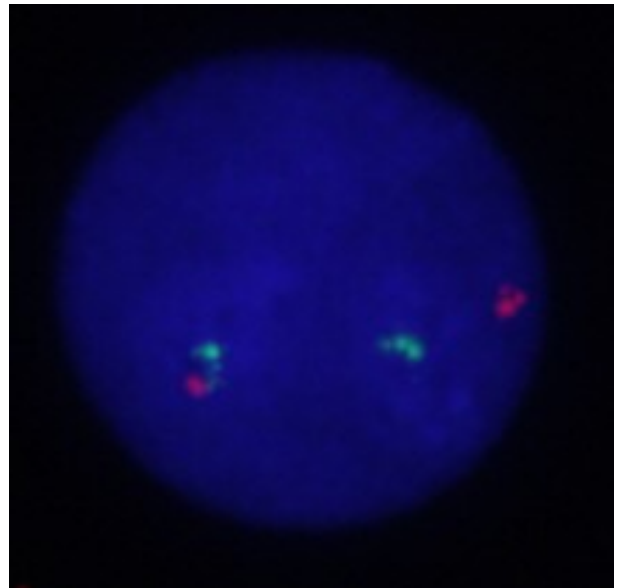
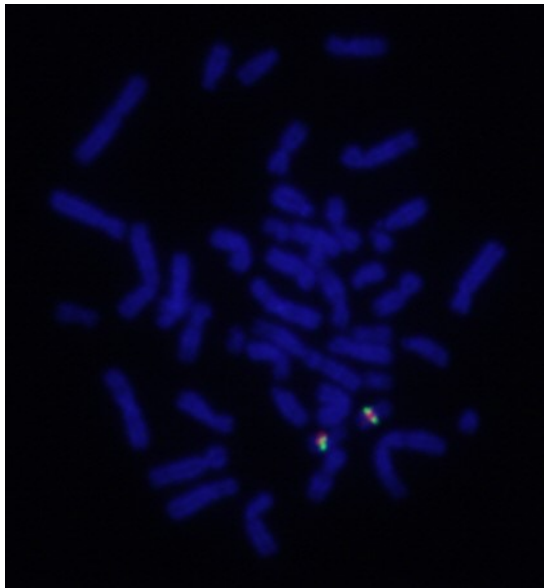
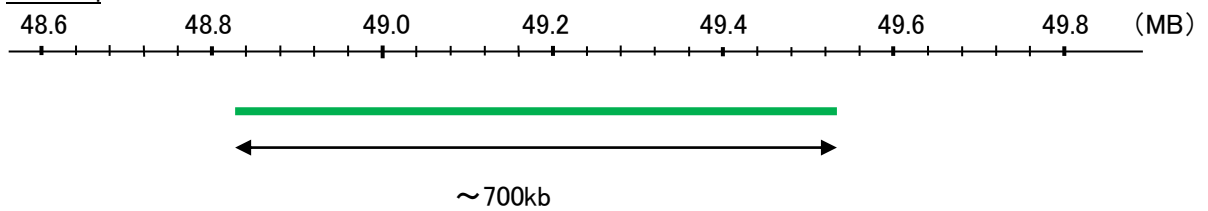
CEN16q

Probe Size Approximately 700kb
Fluorophore FITC
Location 16q12.1

MMP2



CEN16q



Representative images of normal human cell (lymphocyte) stain with the dual color FISH probe. The left image is chromosomes at metaphase, and the right image is an interphase nucleus.