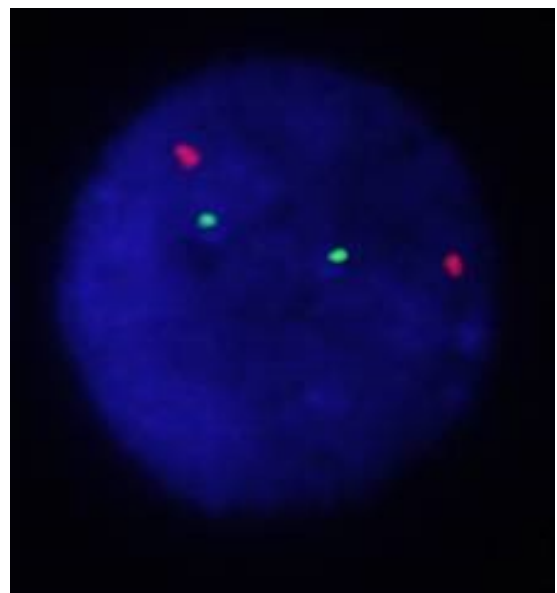
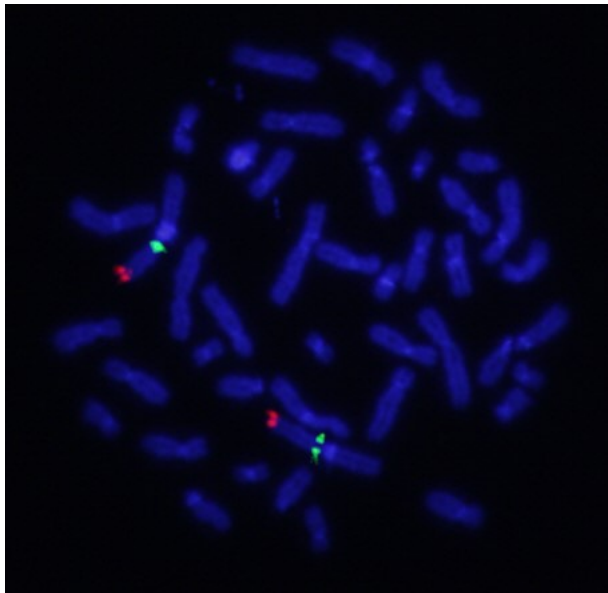
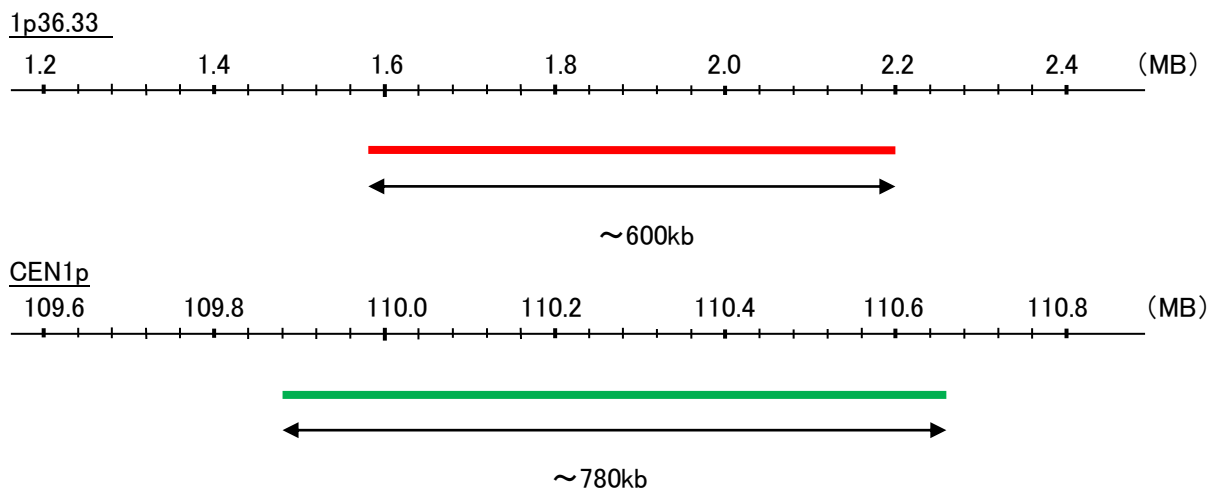


Probe 1p36.33/CEN1p Dual Color FISH Probe  
Product No. GC030

1p36.33  
Probe Size Approximately 600kb  
Fluorophore TexRed  
Location 1p36.33

CEN1p  
Probe Size Approximately 780kb  
Fluorophore FITC  
Location 1p13.3



Representative images of normal human cell (lymphocyte) stain with the dual color FISH probe. The left image is chromosomes at metaphase, and the right image is an interphase nucleus.