

Probe CALR/CEN19q Dual Color FISH Probe  
Product No. GC033

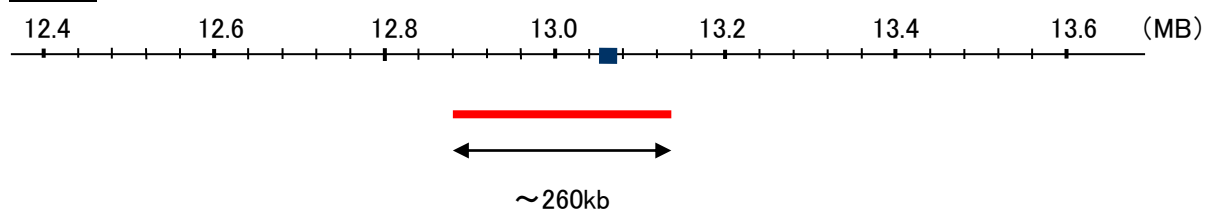
**CALR**

Probe Size Approximately 260kb  
Fluorophore TexRed  
Location 19p13.1-13.2  
Also known as RO; CRT; SSA; cC1qR; HEL-S-99n

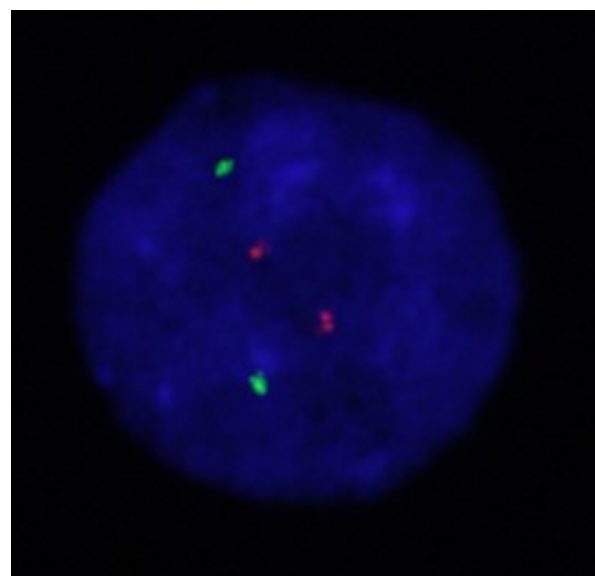
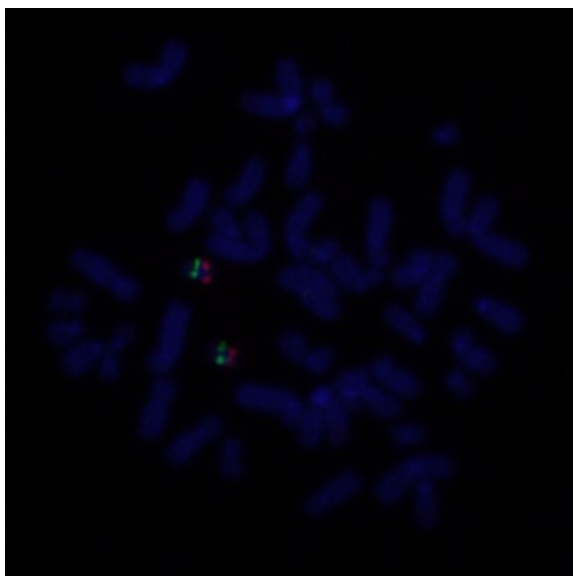
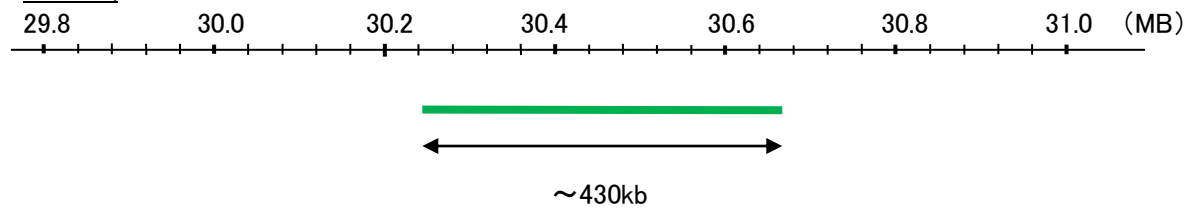
**CEN19q**

Probe Size Approximately 430kb  
Fluorophore FITC  
Location 19q12

CALR



CEN19q



Representative images of normal human cell (lymphocyte) stain with the dual color FISH probe. The left image is chromosomes at metaphase, and the right image is an interphase nucleus.