

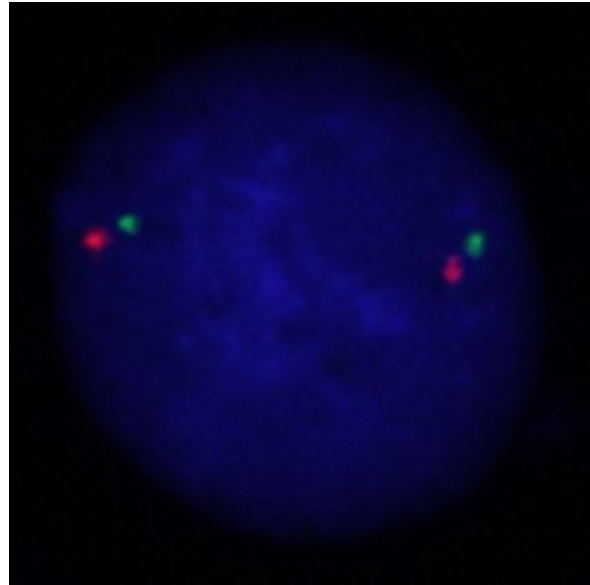
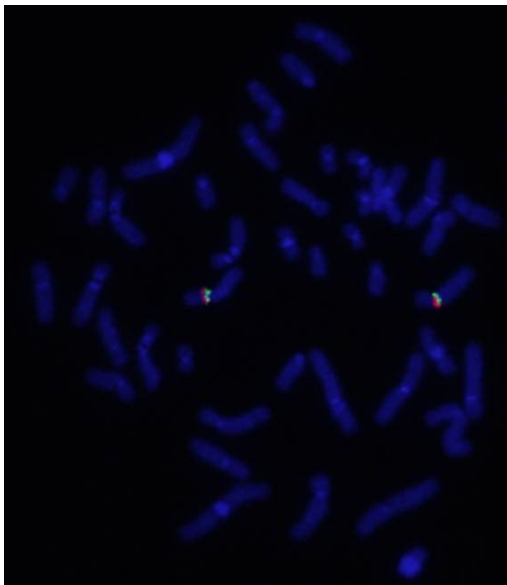
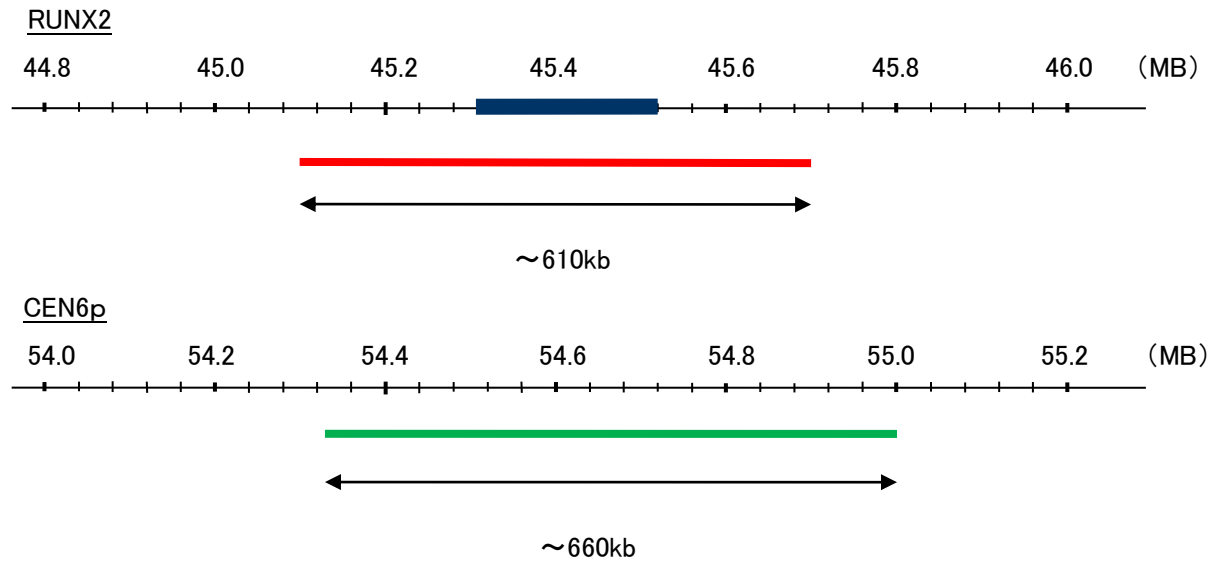
Probe RUNX2/CEN6p Dual Color FISH Probe
Product No. GC034

RUNX2

Probe Size Approximately 610kb
Fluorophore TexRed
Location 6p21
Also known as CCD; AML3; CCD1; CLCD; OSF2; CBFA1; OSF-2; PEA2aA;

CEN6p

Probe Size Approximately 660kb
Fluorophore FITC
Location 6p12.1



Representative images of normal human cell (lymphocyte) stain with the dual color FISH probe. The left image is chromosomes at metaphase, and the right image is an interphase nucleus.