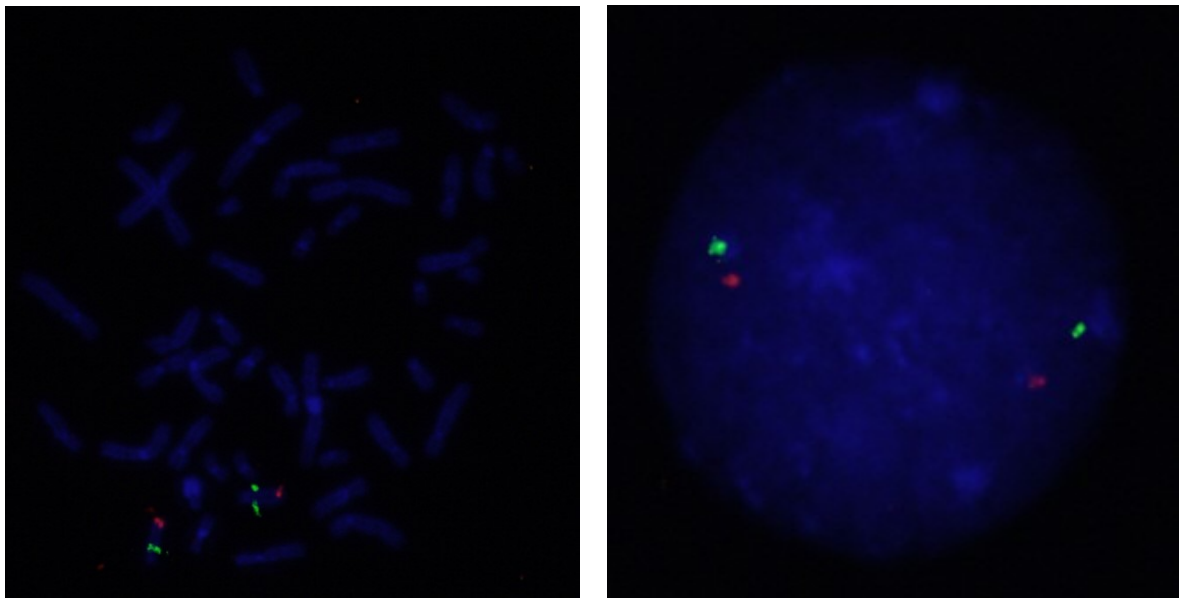
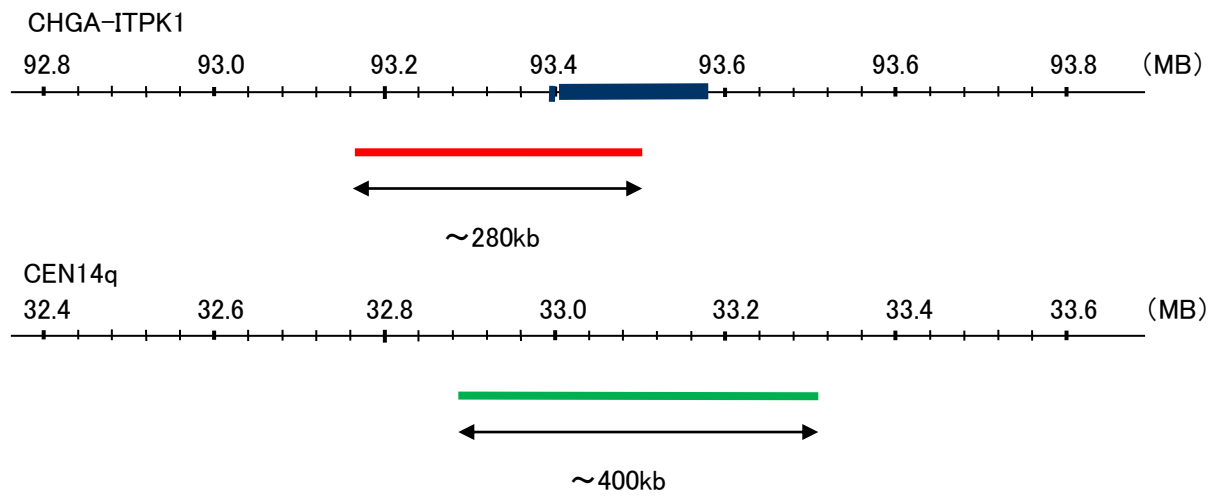


Probe CHGA-ITPK1/CEN14q Dual Color FISH Probe
Product No. GC035

CHGA-ITPK1
Probe Size Approximately 280kb
Fluorophore TexRed
Location 14q32
Also known as CGA- ITRPK1

CEN14q
Probe Size Approximately 400kb
Fluorophore FITC
Location 14q11.2



Representative images of normal human cell (lymphocyte) stain with the dual color FISH probe. The left image is chromosomes at metaphase, and the right image is an interphase nucleus.