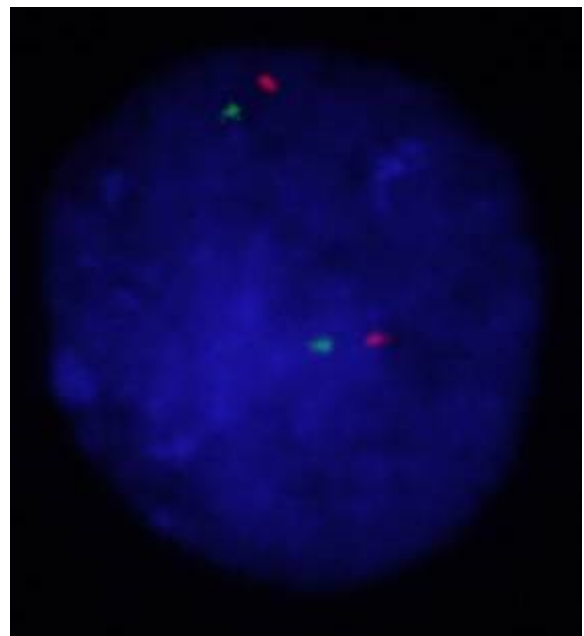
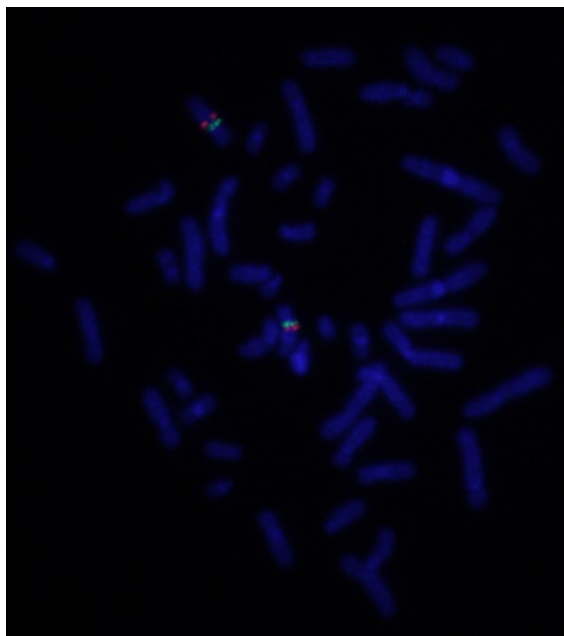
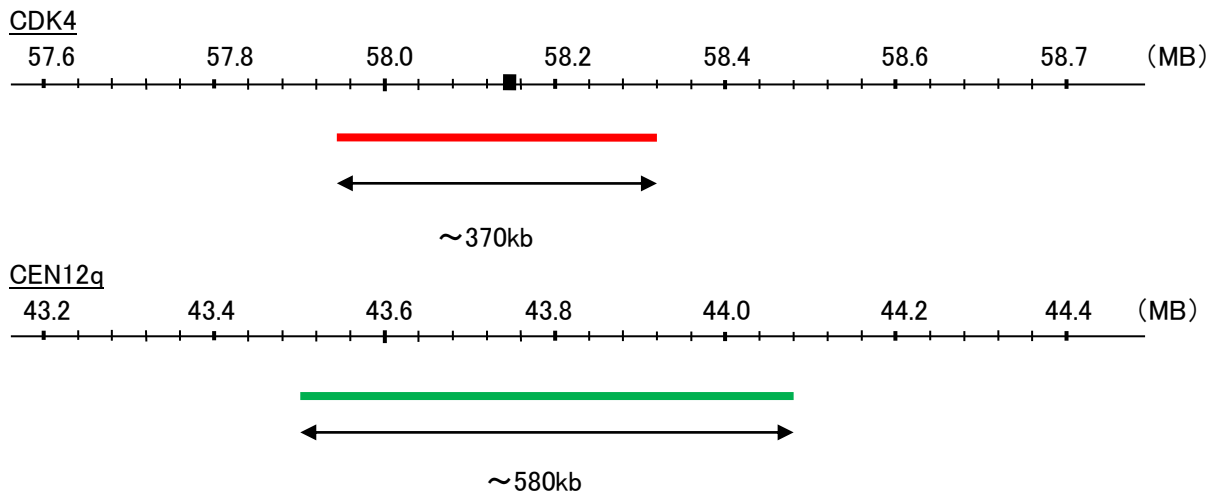


Probe CDK4/CEN12q Dual Color FISH Probe
Product No. GC038

CDK4
Probe Size Approximately 370kb
Fluorophore TexRed
Location 12q14.1
Also known as CMM3; PSK-J3

CEN12q
Probe Size Approximately 580kb
Fluorophore FITC
Location 12q12



Representative images of normal human cell (lymphocyte) stain with the dual color FISH probe. The left image is chromosomes at metaphase, and the right image is an interphase nucleus.