

Probe AIB1/CEN20q Dual Color FISH Probe
Product No. GC039

AIB1

Probe Size Approximately 290kb

Fluorophore TexRed

Location 20q12

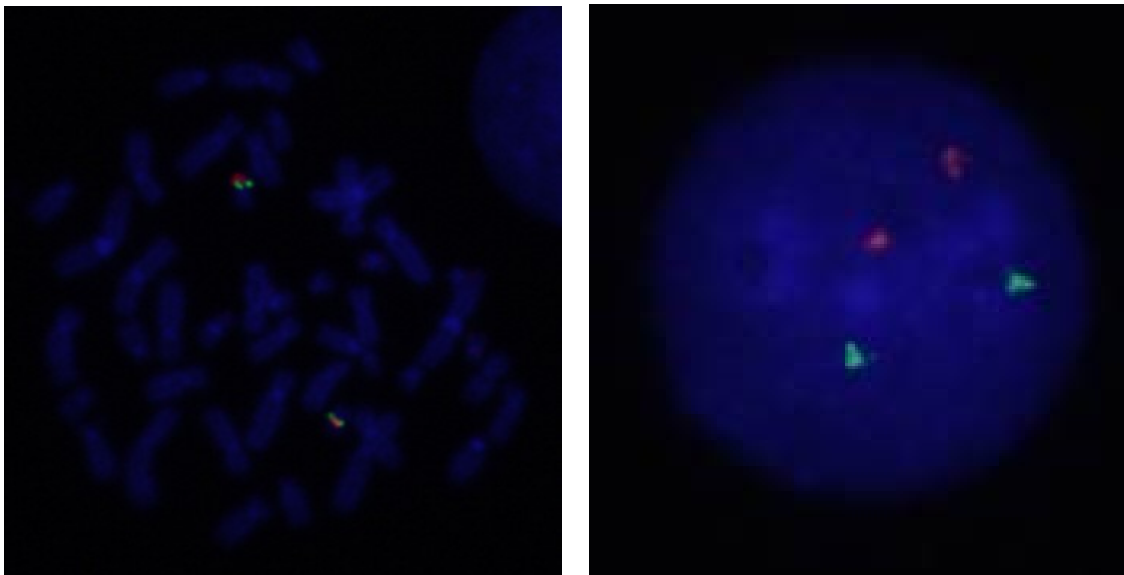
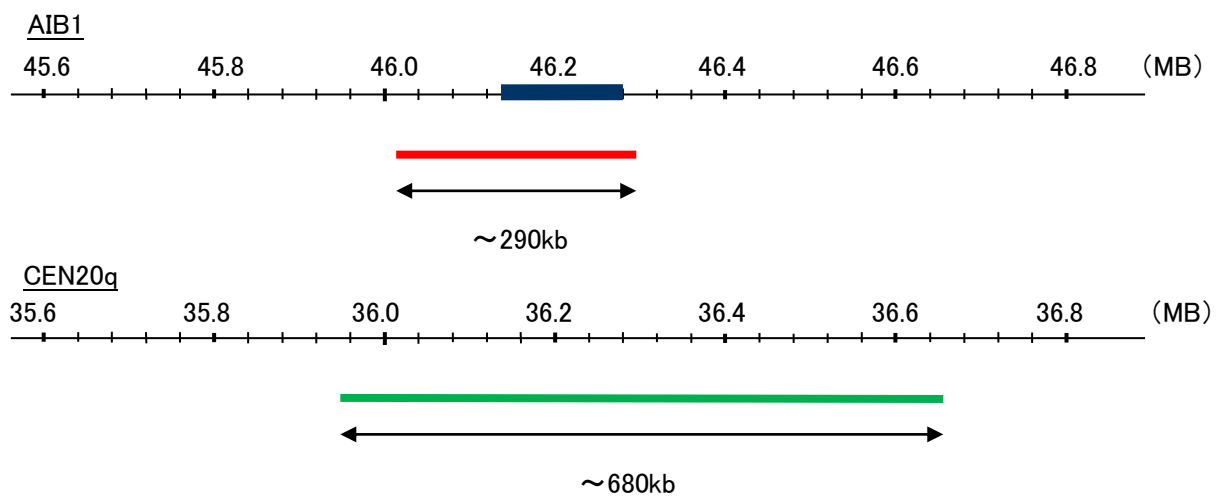
Also known as ACTR; NCOA3; RAC3; SRC3; pCIP; AIB-1; CTG26; SRC-3; CAGH16; KAT13B; TNRC14; TNRC16; TRAM-1; bHLHe42

CEN20q

Probe Size Approximately 680kb

Fluorophore FITC

Location 20q11.22



Representative images of normal human cell (lymphocyte) stain with the dual color FISH probe. The left image is chromosomes at metaphase, and the right image is an interphase nucleus.