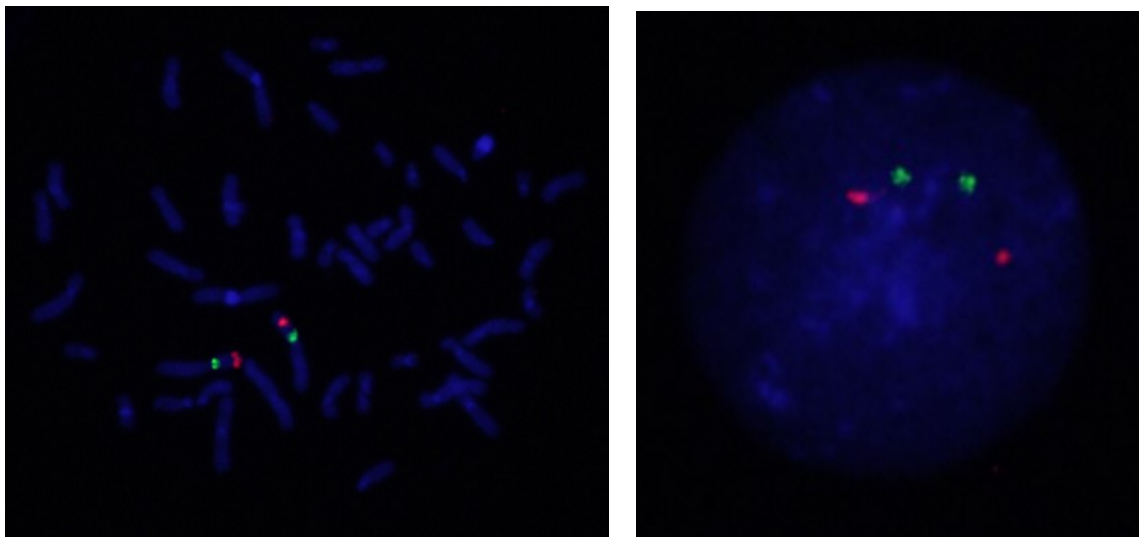
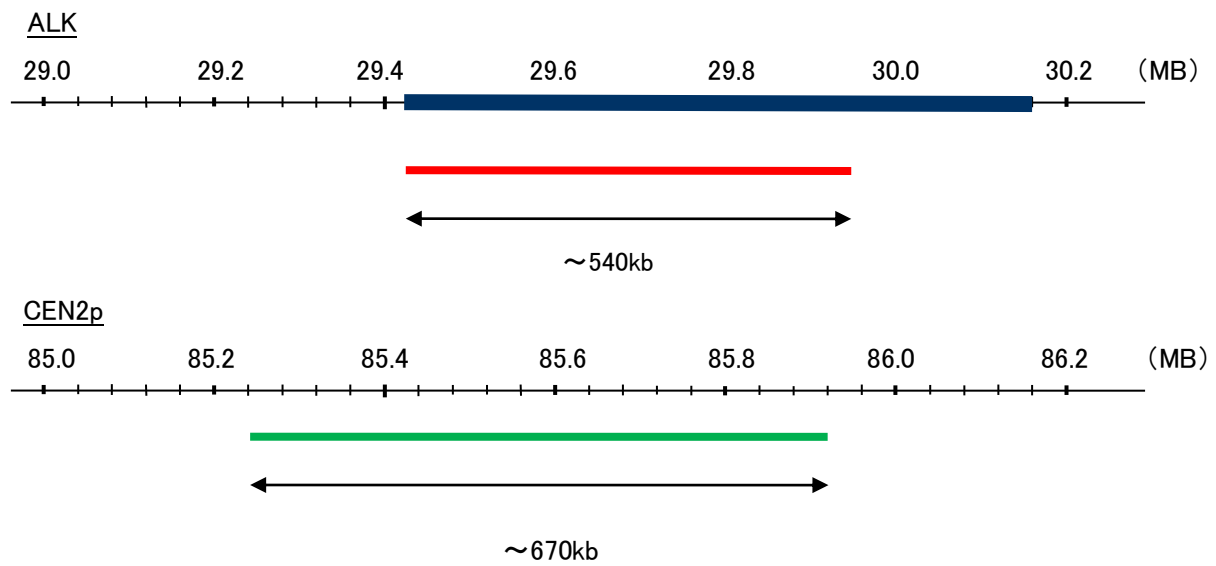


Probe ALK/GEN2p Dual Color FISH Probe
Product No. GC041

ALK
Probe Size Approximately 540kb
Fluorophore TexRed
Location 2p23
Also known as CD246; NBLST3

GEN2p
Probe Size Approximately 670kb
Fluorophore FITC
Location 2p11.2



Representative images of normal human cell (lymphocyte) stain with the dual color FISH probe. The left image is chromosomes at metaphase, and the right image is an interphase nucleus.