

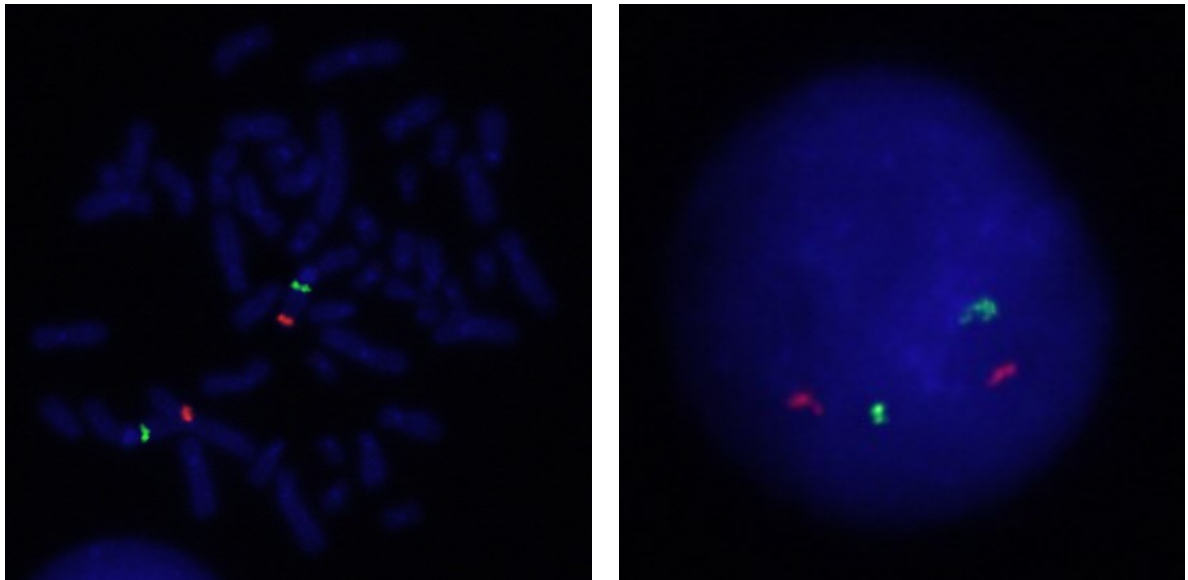
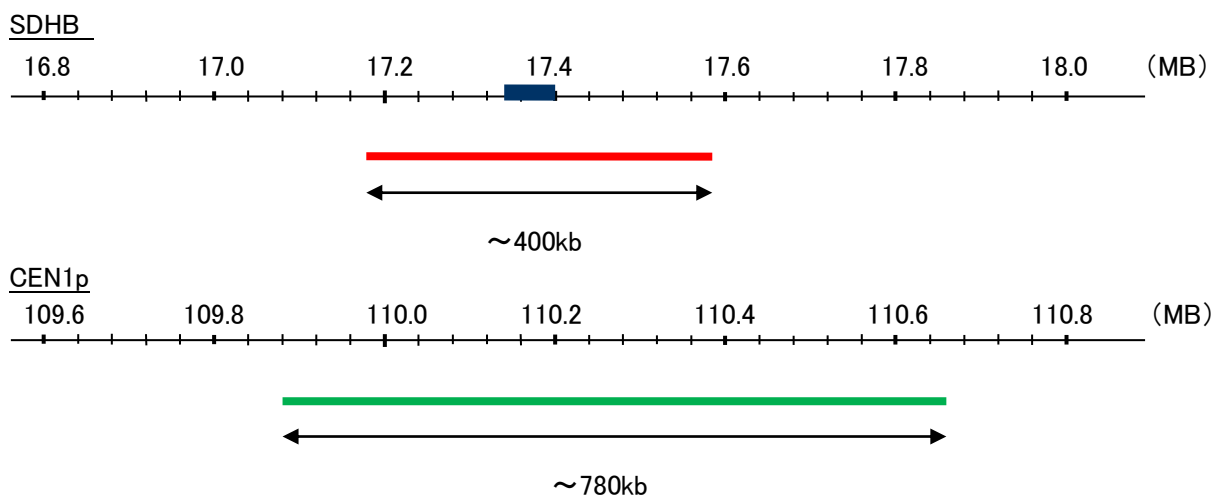
Probe SDHB/CEN1p Dual Color FISH Probe
Product No. GC045

SDHB

Probe Size Approximately 400kb
Fluorophore TexRed
Location 1p36.13
Also known as IP; SDH; CWS2; PGL4; SDH1; SDH2; SDHIP

CEN1p

Probe Size Approximately 780kb
Fluorophore FITC
Location 1p13.3



Representative images of normal human cell (lymphocyte) stain with the dual color FISH probe. The left image is chromosomes at metaphase, and the right image is an interphase nucleus.