

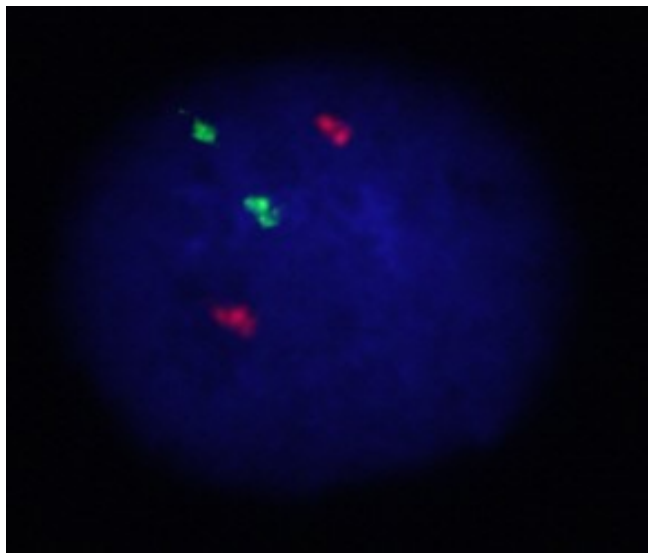
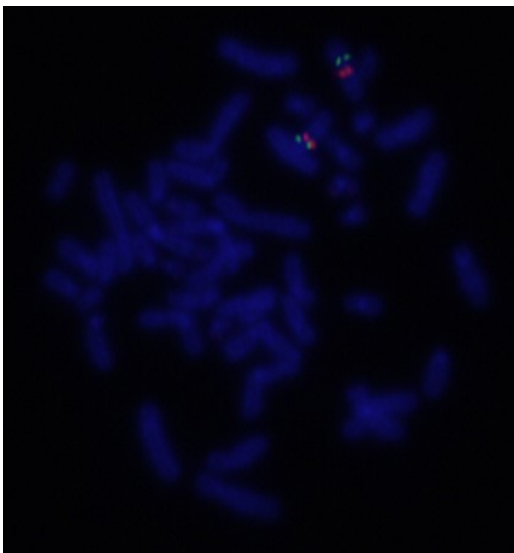
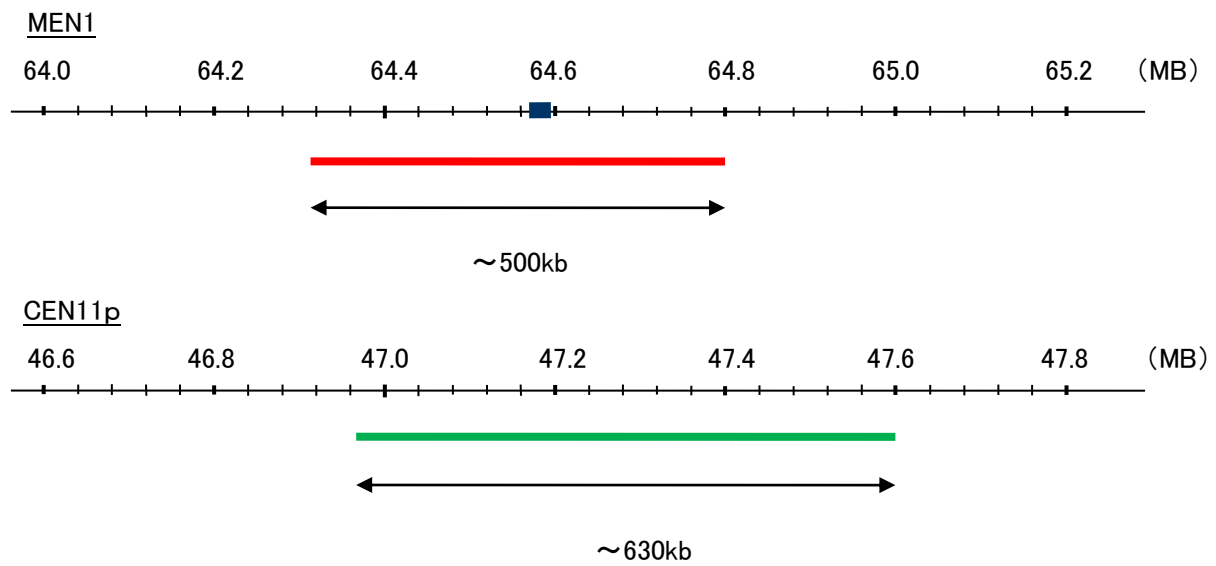
Probe MEM1/CEN11p Dual Color FISH Probe
Product No. GC046

MEN1

Probe Size Approximately 500kb
Fluorophore TexRed
Location 11q13
Also known as MEAI; SCG2

CEN11p

Probe Size Approximately 630kb
Fluorophore FITC
Location 11p11.12



Representative images of normal human cell (lymphocyte) stain with the dual color FISH probe. The left image is chromosomes at metaphase, and the right image is an interphase nucleus.