

Probe CXCL1/CEN4q Dual Color FISH Probe
Product No. GC049

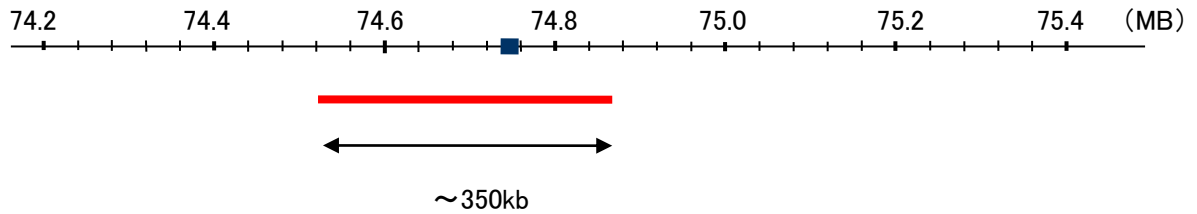
CXCL1

Probe Size Approximately 350kb
Fluorophore TexRed
Location 4q21
Also known as FSP; GRO1; GROa; MGSA; NAP-3; SCYB1; MGSA-a

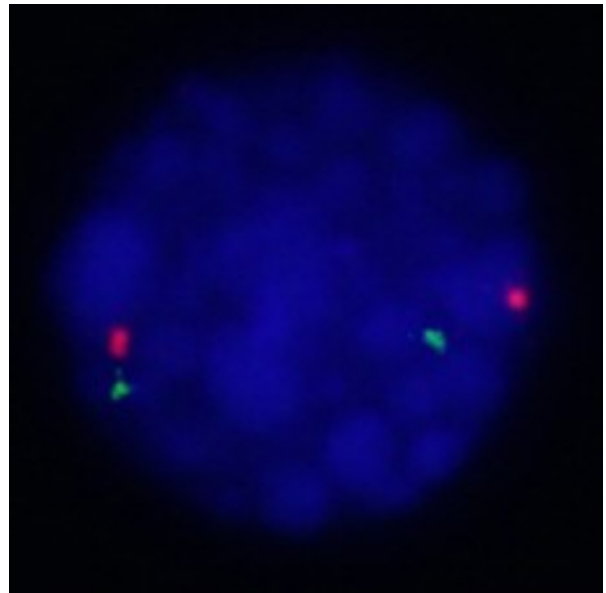
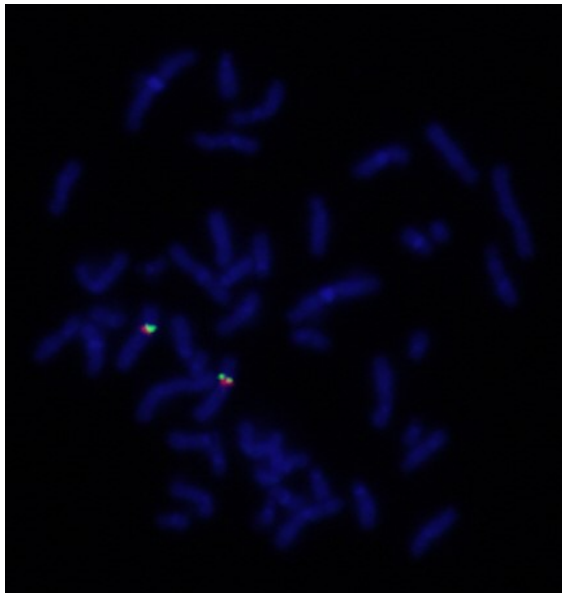
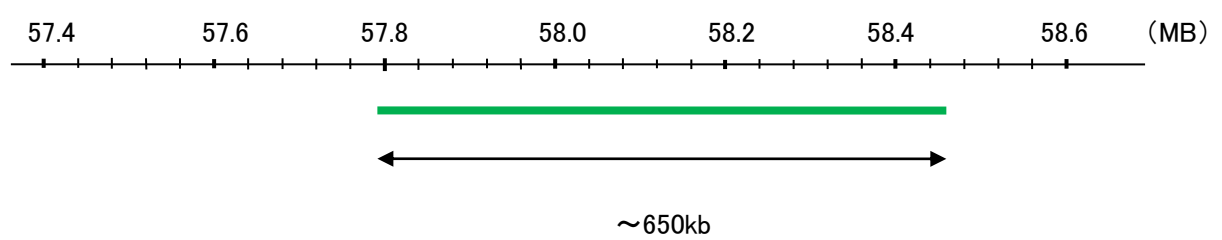
CEN4q

Probe Size Approximately 650kb
Fluorophore FITC
Location 4q12

CXCL1



CEN4q



Representative images of normal human cell (lymphocyte) stain with the dual color FISH probe. The left image is chromosomes at metaphase, and the right image is an interphase nucleus.