

Probe TPM4/CEN19q Dual Color FISH Probe
Product No. GC050

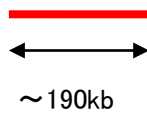
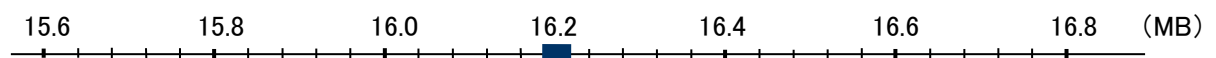
TPM4

Probe Size Approximately 190kb
Fluorophore TexRed
Location 19p13.1
Also known as HEL-S-108

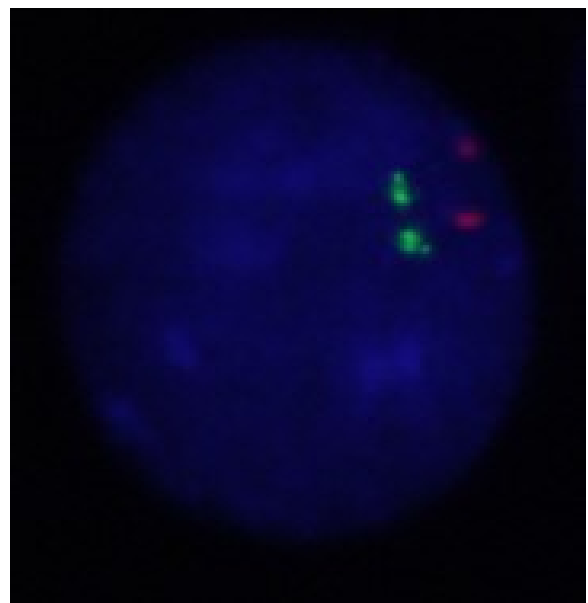
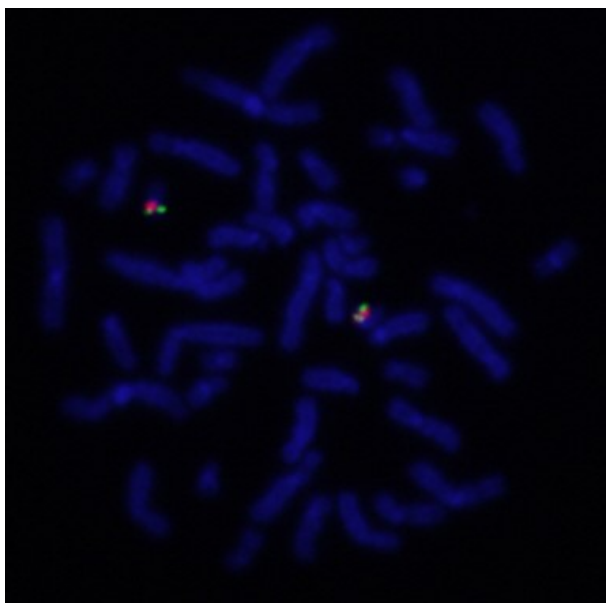
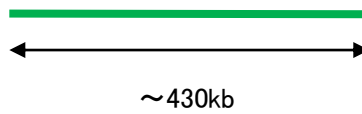
CEN19q

Probe Size Approximately 430kb
Fluorophore FITC
Location 19q12

TPM4



CEN19q



Representative images of normal human cell (lymphocyte) stain with the dual color FISH probe. The left image is chromosomes at metaphase, and the right image is an interphase nucleus.