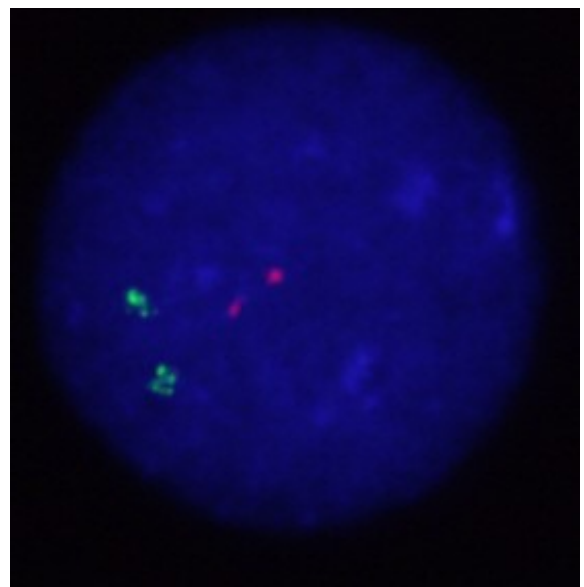
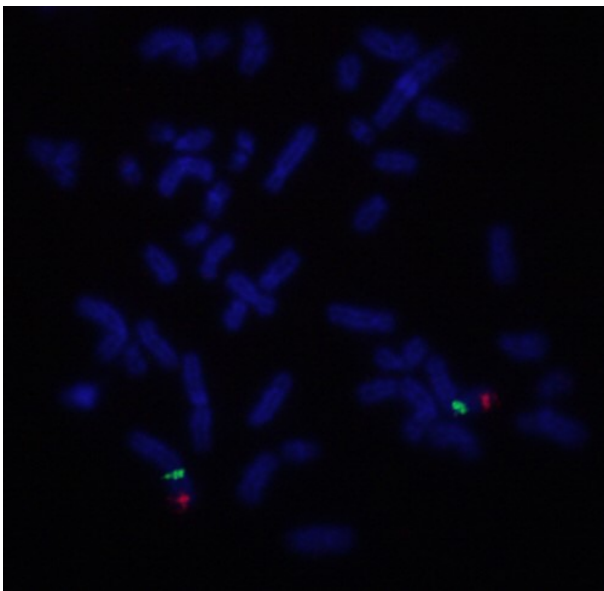
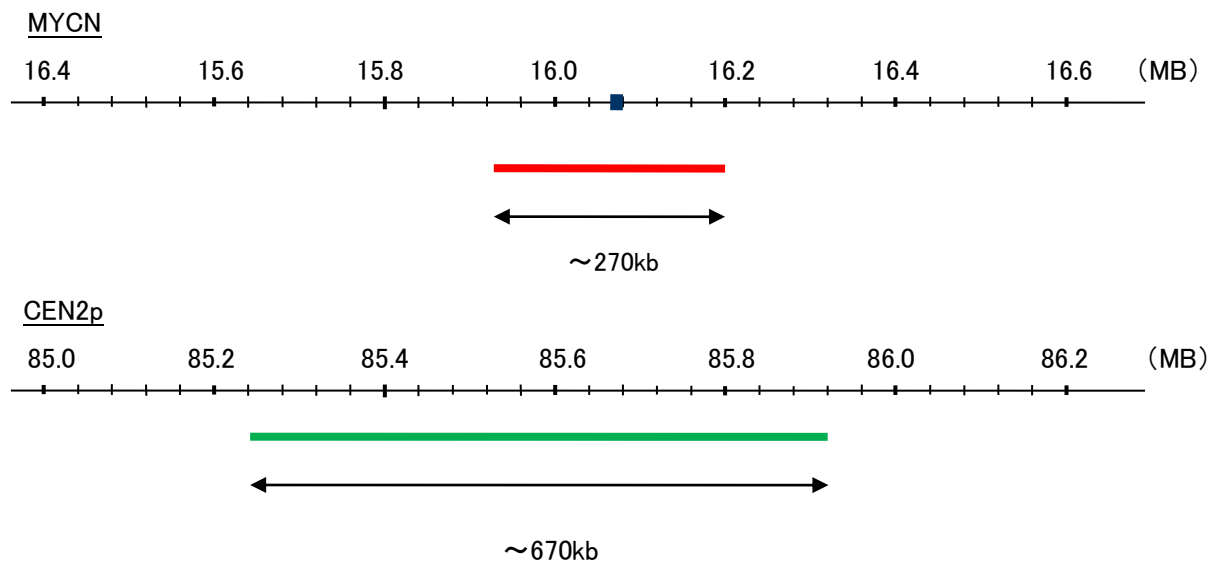


Probe MYCN/CEN2p Dual Color FISH Probe  
Product No. GC054

**MYCN**  
Probe Size Approximately 270kb  
Fluorophore TexRed  
Location 2p24.1  
Also known as NMYC; ODED; MODED; N-myc; bHLHe37

**CEN2p**  
Probe Size Approximately 670kb  
Fluorophore FITC  
Location 2p11.2



Representative images of normal human cell (lymphocyte) stain with the dual color FISH probe. The left image is chromosomes at metaphase, and the right image is an interphase nucleus.