

Probe FGFR1/CEN8q Dual Color FISH Probe  
Product No. GC055

**FGFR1**

Probe Size Approximately 320kb

Fluorophore TexRed

Location 8p12

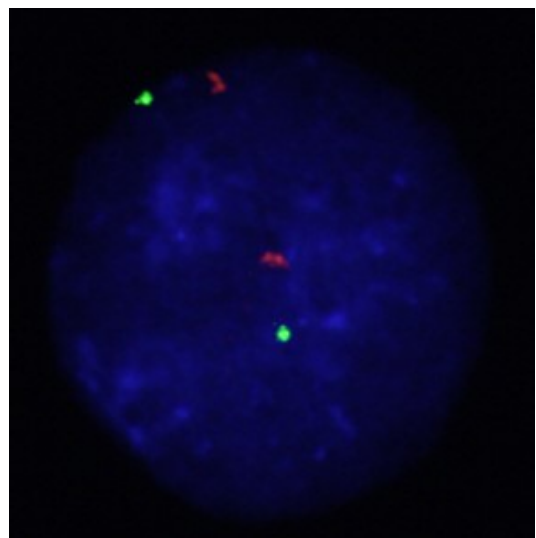
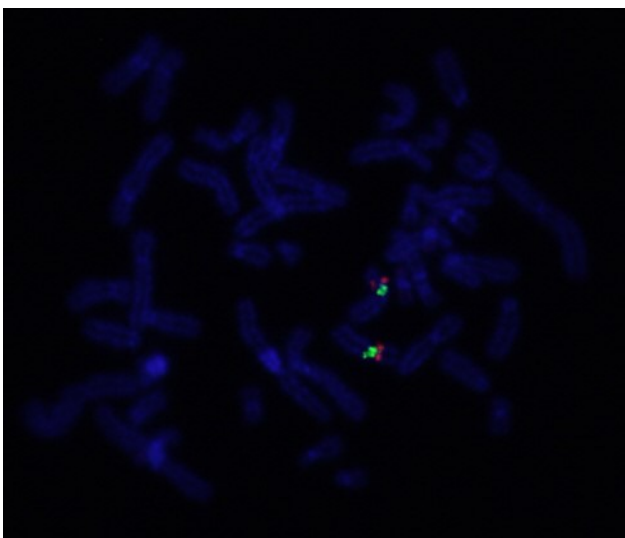
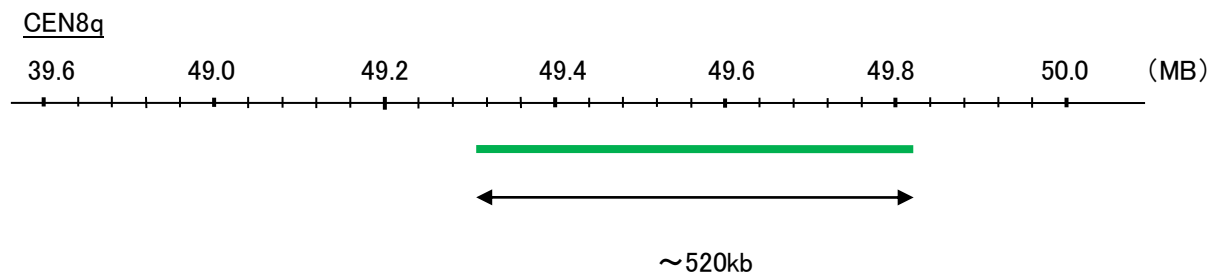
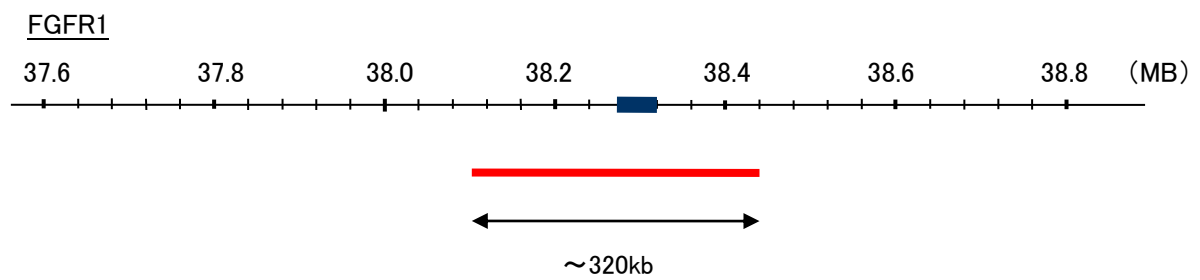
Also known as CEK; FLG; HH2; OGD; FLT2; KAL2; BFGFR; CD331; FGFR; FLT-2; HBGFR; N-SAM; FGFR-1; HRTFDS; bFGF-R-1

**CEN8q**

Probe Size Approximately 520kb

Fluorophore FITC

Location 8q11.21



Representative images of normal human cell (lymphocyte) stain with the dual color FISH probe. The left image is chromosomes at metaphase, and the right image is an interphase nucleus.