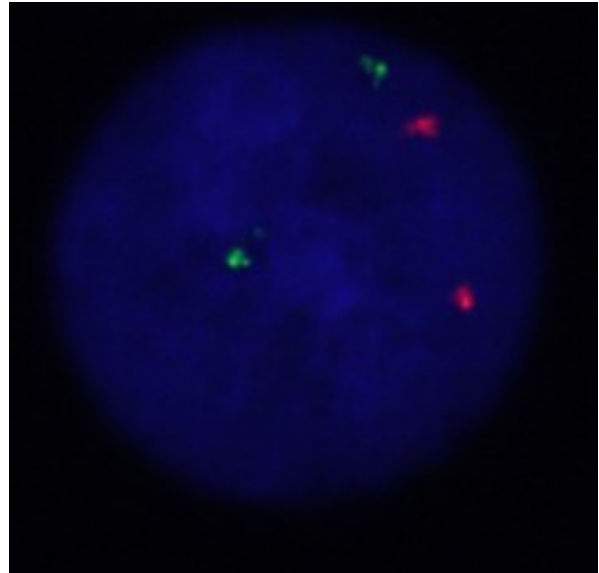
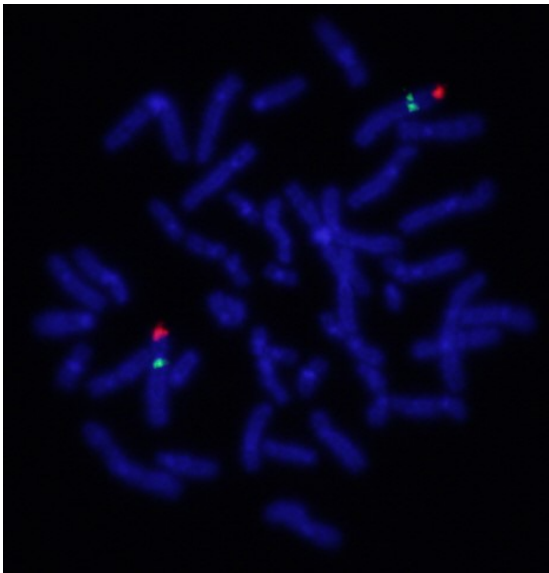
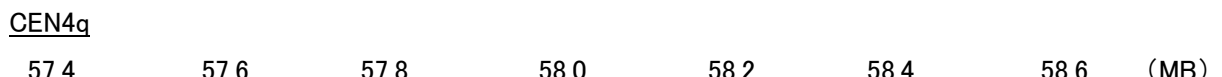


Probe FGFR3/CEN4q Dual Color FISH Probe
Product No. GC056

FGFR3
Probe Size Approximately 400kb
Fluorophore TexRed
Location 4p16.3
Also known as ACH; CEK2; JTK4; CD333; HSGFR3EX

CEN4q
Probe Size Approximately 650kb
Fluorophore FITC
Location 4q13



Representative images of normal human cell (lymphocyte) stain with the dual color FISH probe. The left image is chromosomes at metaphase, and the right image is an interphase nucleus.