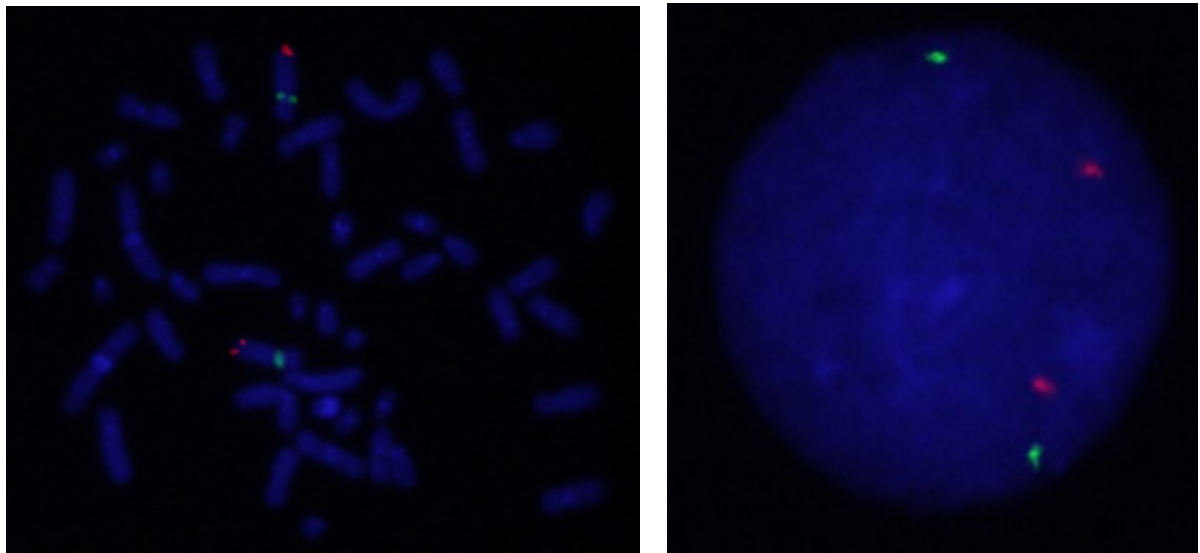
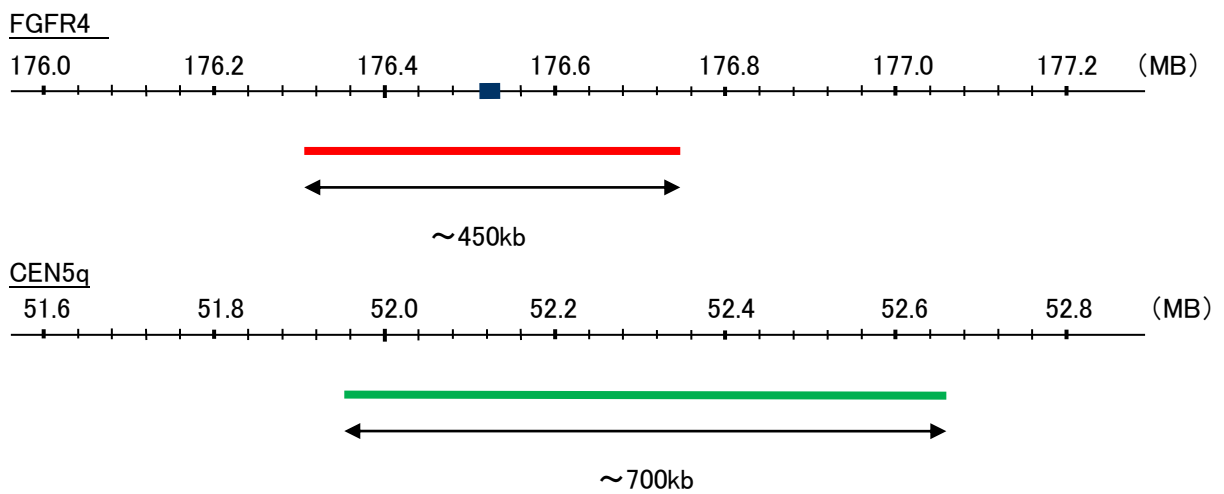


Probe FGFR4/CEN5q Dual Color FISH Probe
Product No. GC057

FGFR4
Probe Size Approximately 450kb
Fluorophore TexRed
Location 5q35.1
Also known as TKF; JTK2; CD334

CEN5q
Probe Size Approximately 700kb
Fluorophore FITC
Location 5q11.2



Representative images of normal human cell (lymphocyte) stain with the dual color FISH probe. The left image is chromosomes at metaphase, and the right image is an interphase nucleus.