

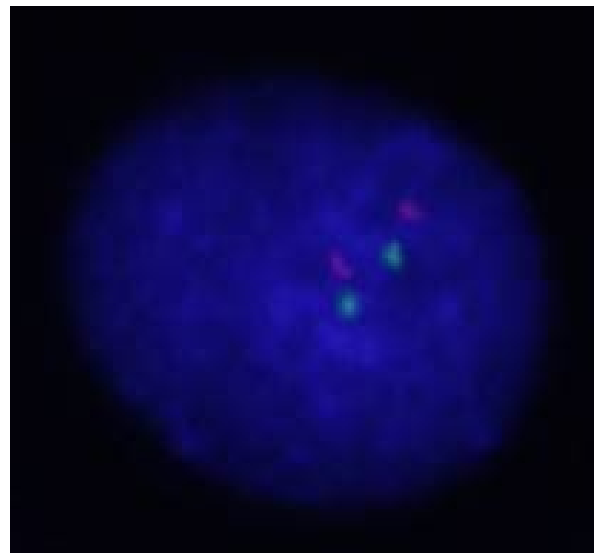
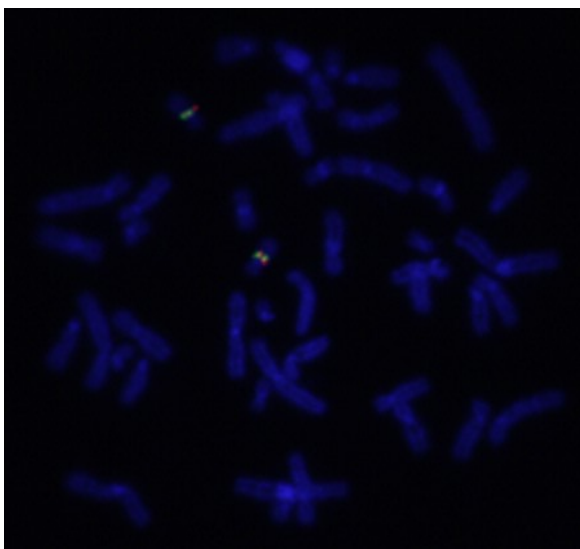
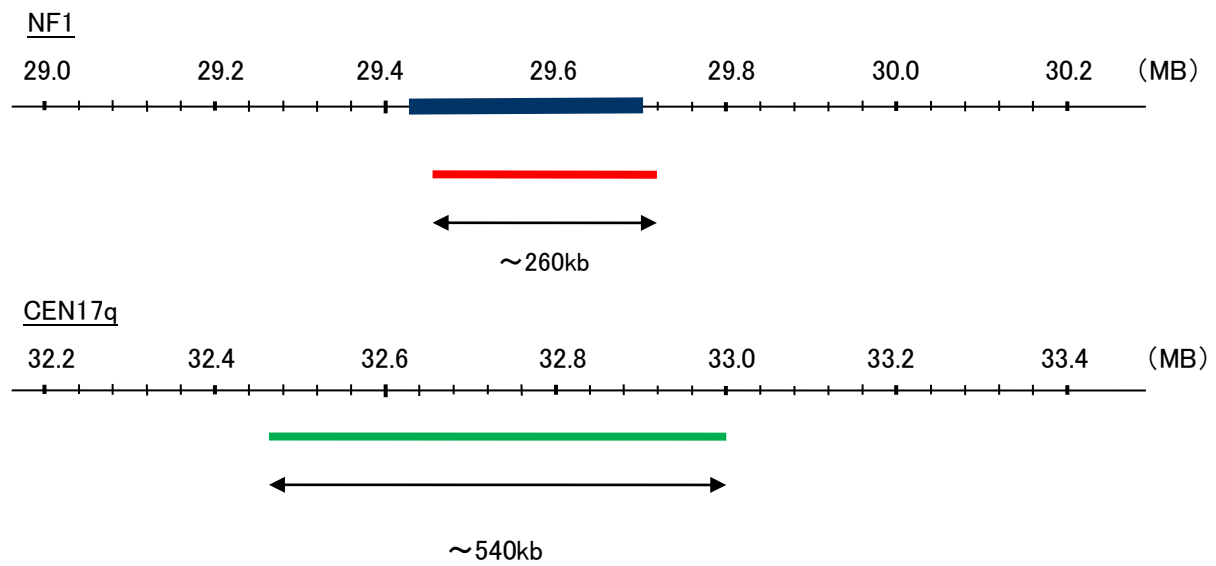
Probe NF1/CEN17q Dual Color FISH Probe
Product No. GC058

NF1

Probe Size Approximately 260kb
Fluorophore TexRed
Location 17q11.2
Also known as WSS; NFNS; VRNF

CEN17q

Probe Size Approximately 540kb
Fluorophore FITC
Location 17q11.2



Representative images of normal human cell (lymphocyte) stain with the dual color FISH probe. The left image is chromosomes at metaphase, and the right image is an interphase nucleus.