

Probe ATOX1/CEN5q Dual Color FISH Probe
Product No. GC060

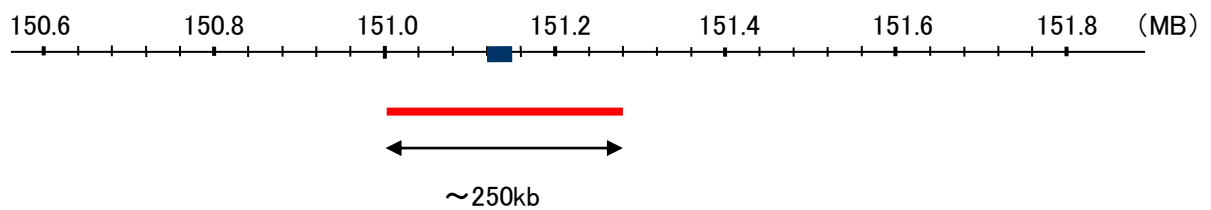
ATOX1

Probe Size Approximately 250kb
Fluorophore TexRed
Location 5q32
Also known as ATX1; HAH1

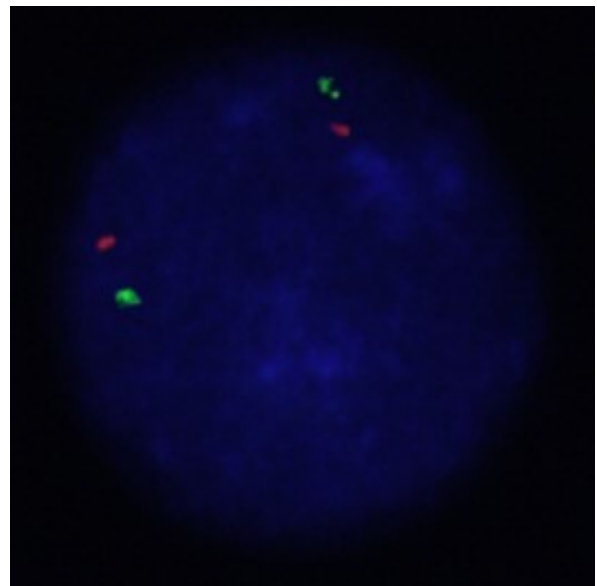
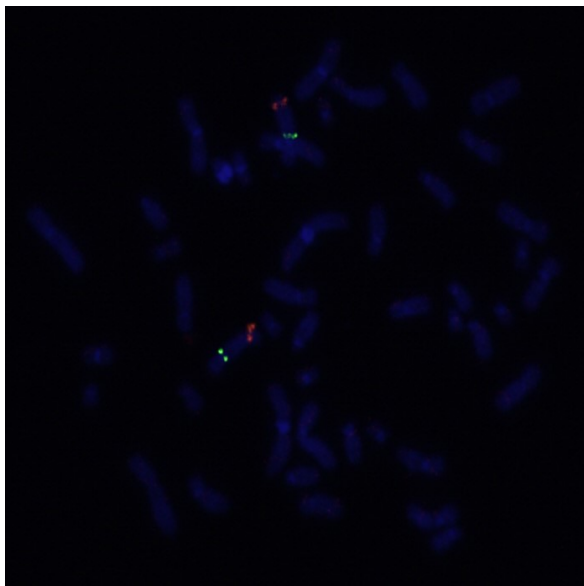
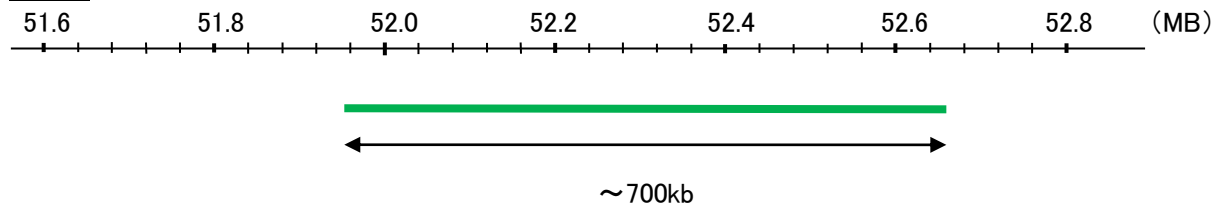
CEN5q

Probe Size Approximately 700kb
Fluorophore FITC
Location 5q11.2

ATOX1



CEN5q



Representative images of normal human cell (lymphocyte) stain with the dual color FISH probe. The left image is chromosomes at metaphase, and the right image is an interphase nucleus.