

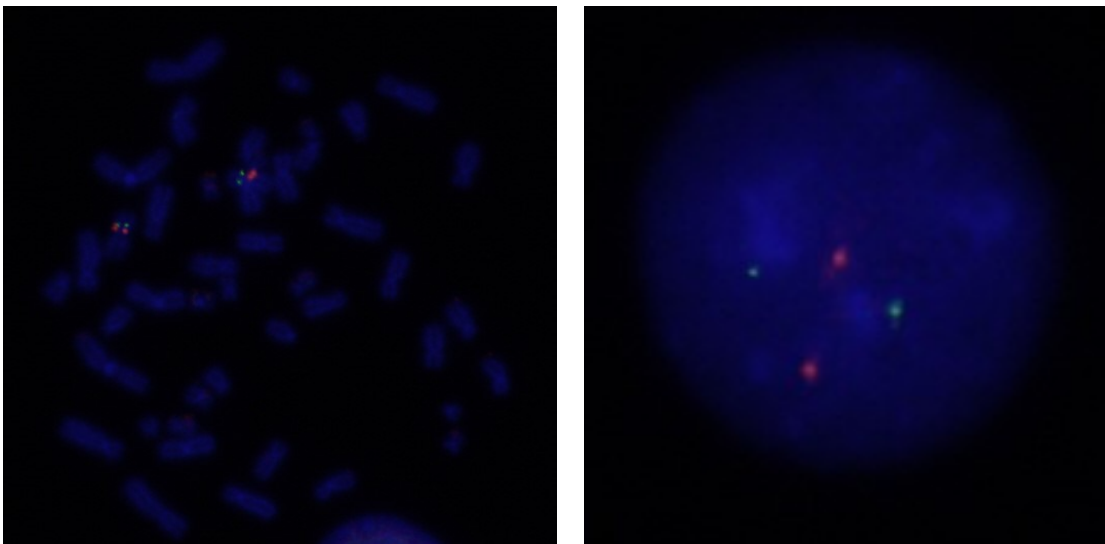
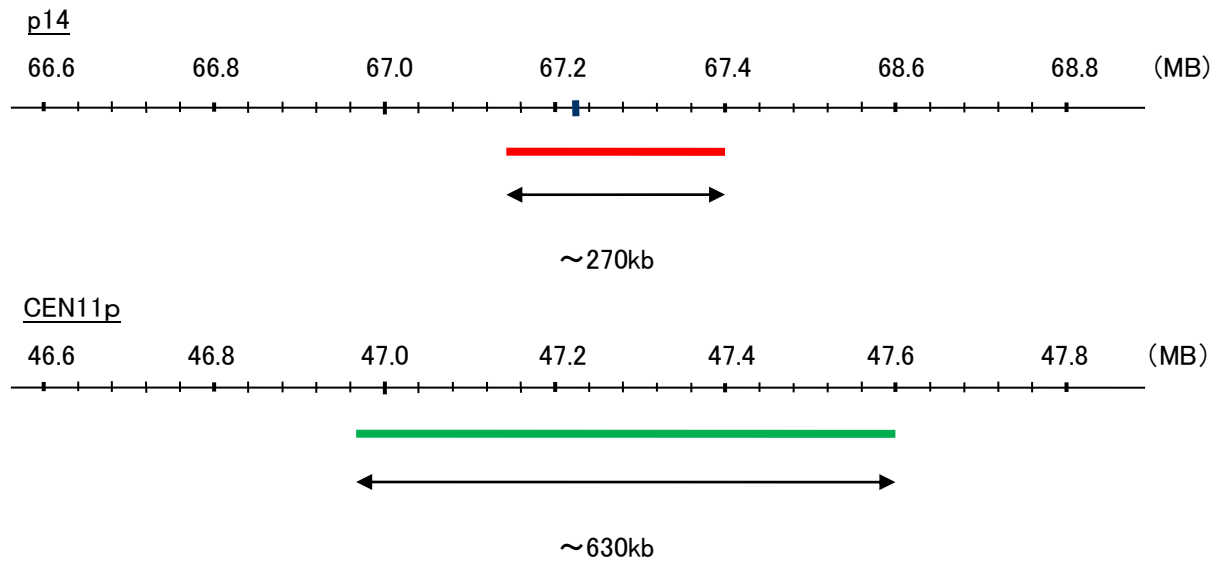
Probe p14/CEN11p Dual Color FISH Probe
Product No. GC066

p14

Probe Size Approximately 270kb
Fluorophore TexRed
Location 11q13.2
Also known as CDK2AP2; DOC-1R

CEN11p

Probe Size Approximately 630kb
Fluorophore FITC
Location 11p11.12



Representative images of normal human cell (lymphocyte) stain with the dual color FISH probe. The left image is chromosomes at metaphase, and the right image is an interphase nucleus.