

Probe SLC31A1/CEN9q Dual Color FISH Probe
Product No. GC068

SLC31A1

Probe Size Approximately 300kb
Fluorophore TexRed
Location 9q32
Also known as CTR1; COPT1

CEN9q

Probe Size Approximately 470kb
Fluorophore FITC
Location 9q21

SLC31A1

115.4 115.6 115.8 116.0 116.2 116.4 116.6 (MB)



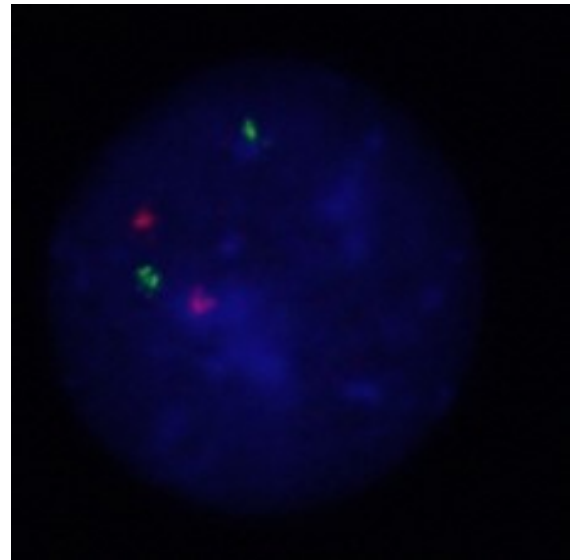
~300kb

CEN9q

71.0 71.2 71.4 71.6 71.8 72.0 72.2 (MB)



~470kb



Representative images of normal human cell (lymphocyte) stain with the dual color FISH probe. The left image is chromosomes at metaphase, and the right image is an interphase nucleus.