

Probe SQSTM1/CEN5q Dual Color FISH Probe  
Product No. GC069

SQSTM1

Probe Size Approximately 240kb  
Fluorophore TexRed  
Location 5q35.3  
Also known as p60; p62; A170; OSIL; PDB3; ZIP3; p62B; FTDALS3

CEN5q

Probe Size Approximately 700kb  
Fluorophore FITC  
Location 5q11.2

SQSTM1

178.6 178.8 179.0 179.2 179.4 179.6 179.8 (MB)



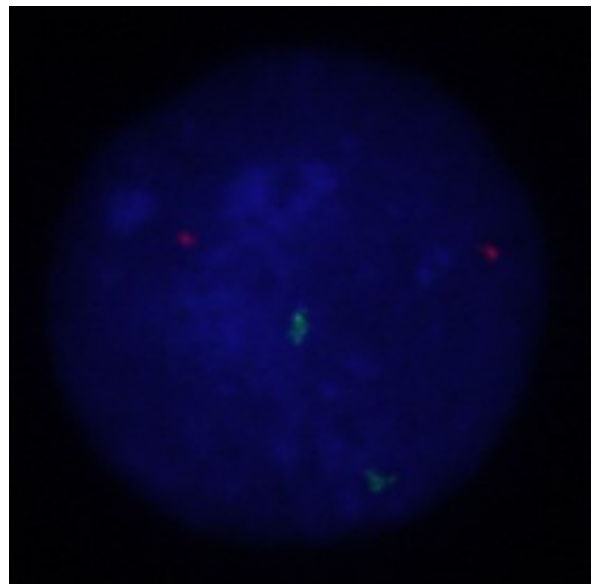
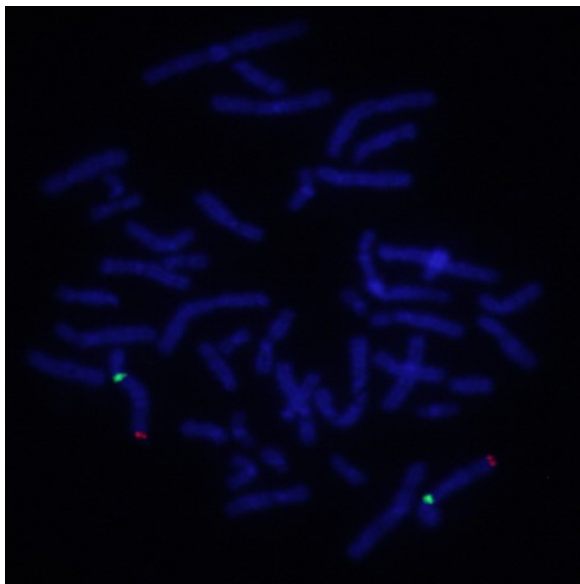
~240kb

CEN5q

51.6 51.8 52.0 52.2 52.4 52.6 52.8 (MB)



~700kb



Representative images of normal human cell (lymphocyte) stain with the dual color FISH probe. The left image is chromosomes at metaphase, and the right image is an interphase nucleus.