

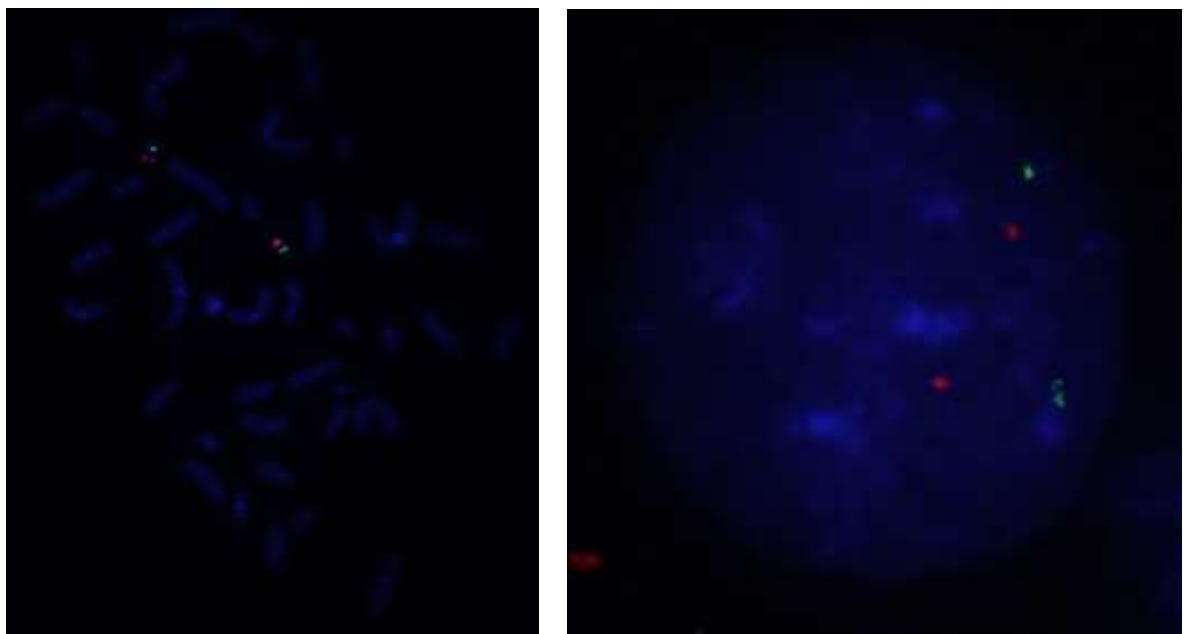
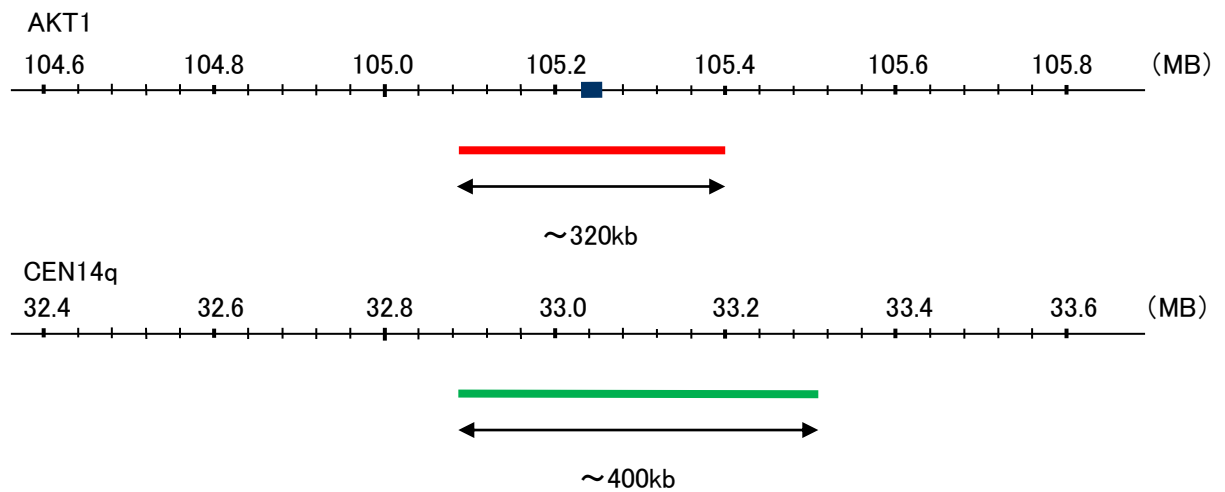
Probe AKT1/GEN14q Dual Color FISH Probe  
Product No. GC070

**AKT1**

Probe Size Approximately 320kb  
Fluorophore TexRed  
Location 14q32.33  
Also known as AKT; PKB; RAC; CWS6; PRKBA; PKB-ALPHA; RAC-ALPHA

**CEN14q**

Probe Size Approximately 400kb  
Fluorophore FITC  
Location 14q12



Representative images of normal human cell (lymphocyte) stain with the dual color FISH probe. The left image is chromosomes at metaphase, and the right image is an interphase nucleus.