

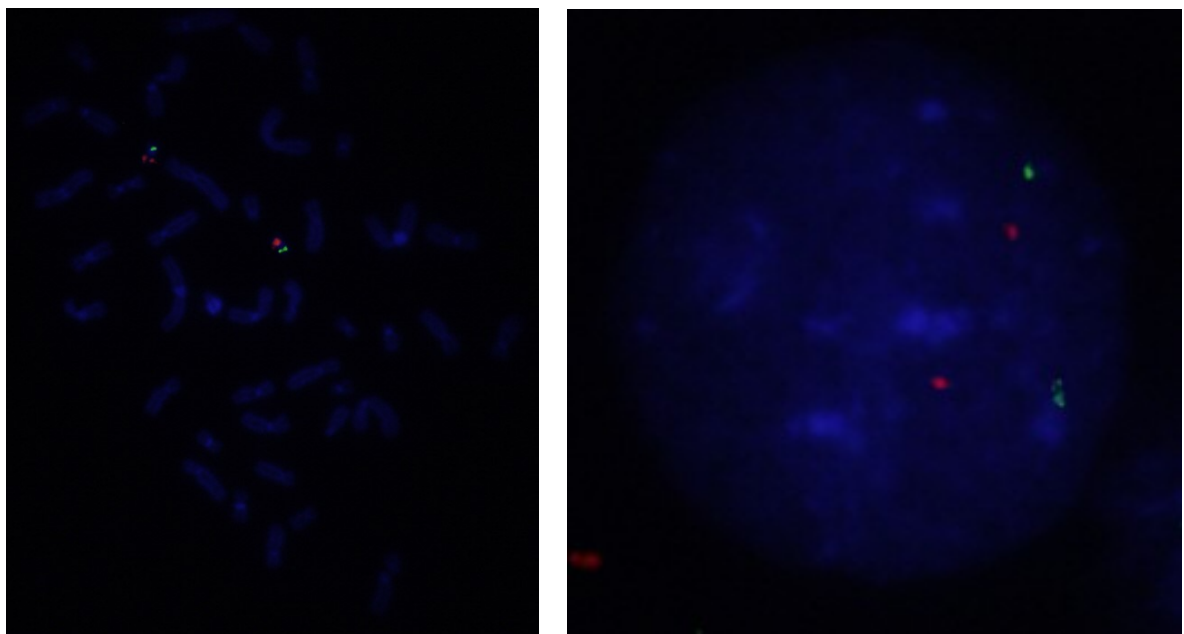
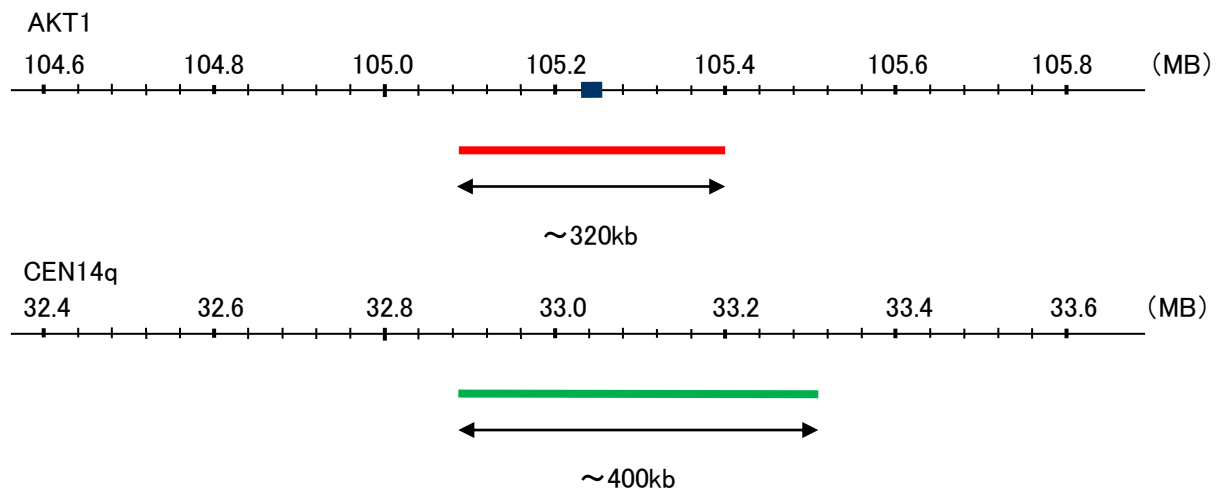
Probe AKT1/GEN14q Dual Color FISH Probe
Product No. GC070

AKT1

Probe Size Approximately 320kb
Fluorophore TexRed
Location 14q32.33
Also known as AKT; PKB; RAC; CWS6; PRKBA; PKB-ALPHA; RAC-ALPHA

CEN14q

Probe Size Approximately 400kb
Fluorophore FITC
Location 14q11.2



Representative images of normal human cell (lymphocyte) stain with the dual color FISH probe. The left image is chromosomes at metaphase, and the right image is an interphase nucleus.