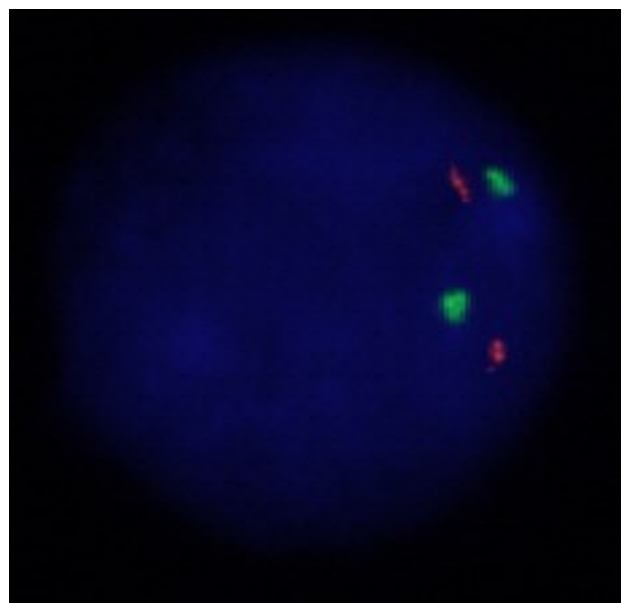
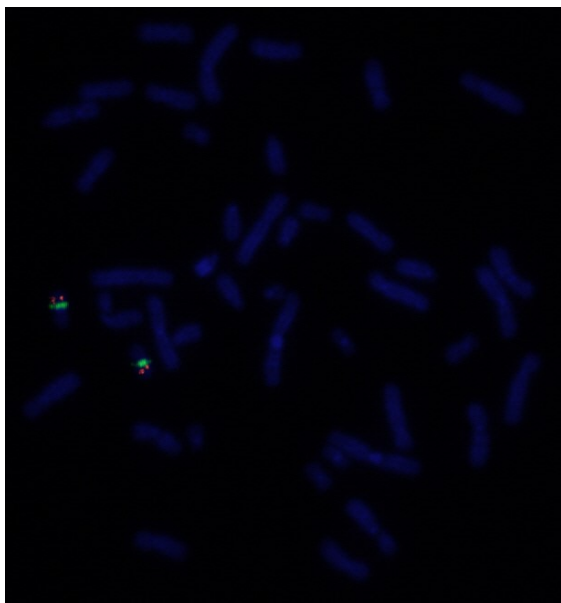
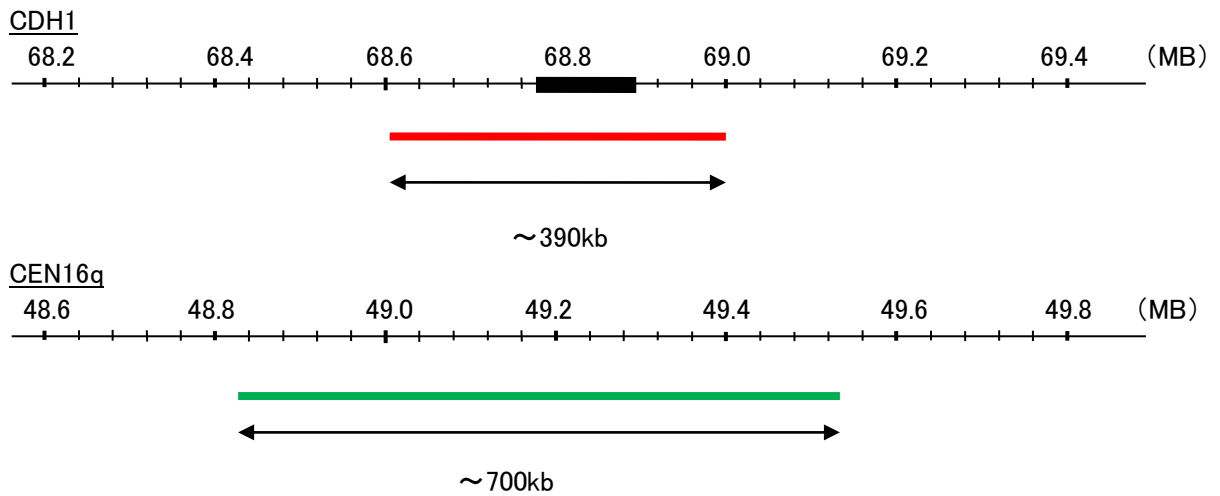


Probe CDH1/CEN16q Dual Color FISH Probe
Product No. GC074

CDH1
Probe Size Approximately 390kb
Fluorophore TexRed
Location 16q22.1
Also known as UVO; CDHE; ECAD; LCAM; Arc-1; CD324

CEN16q
Probe Size Approximately 700kb
Fluorophore FITC
Location 16q12.1



Representative images of normal human cell (lymphocyte) stain with the dual color FISH probe. The left image is chromosomes at metaphase, and the right image is an interphase nucleus.