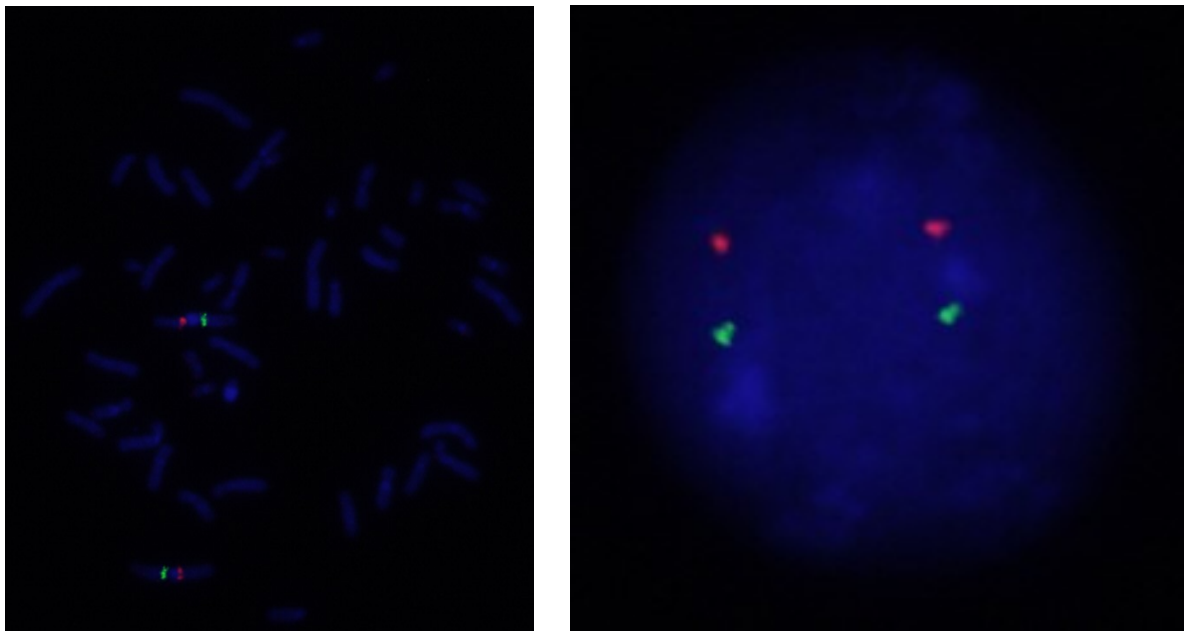
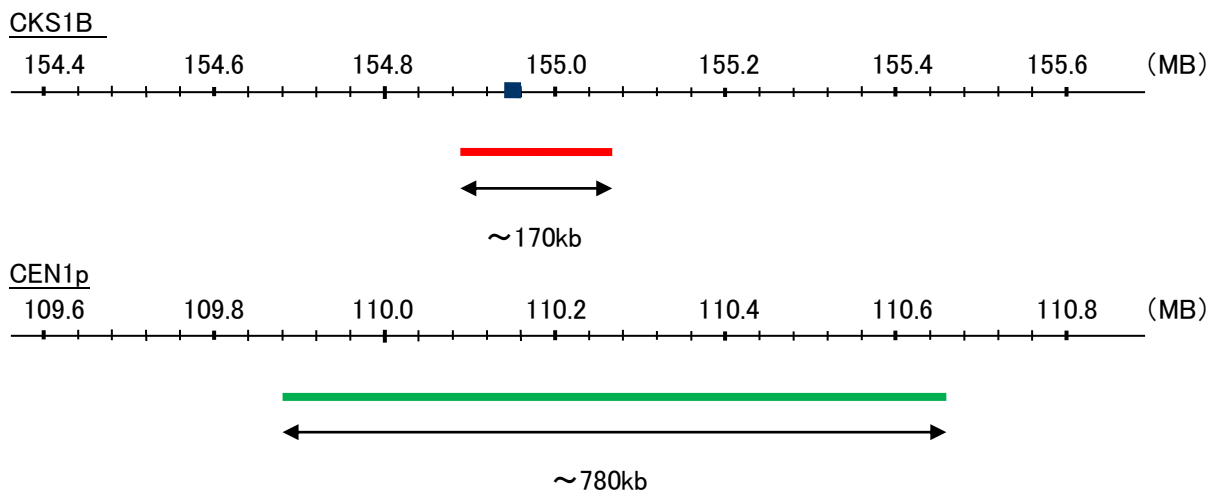


Probe CKS1B/CEN1p Dual Color FISH Probe
Product No. GC075

CKS1B
Probe Size Approximately 170kb
Fluorophore TexRed
Location 1q21
Also known as CKS1; ckshs1; PNAS-16; PNAS-18

CEN1p
Probe Size Approximately 780kb
Fluorophore FITC
Location 1p13.3



Representative images of normal human cell (lymphocyte) stain with the dual color FISH probe. The left image is chromosomes at metaphase, and the right image is an interphase nucleus.