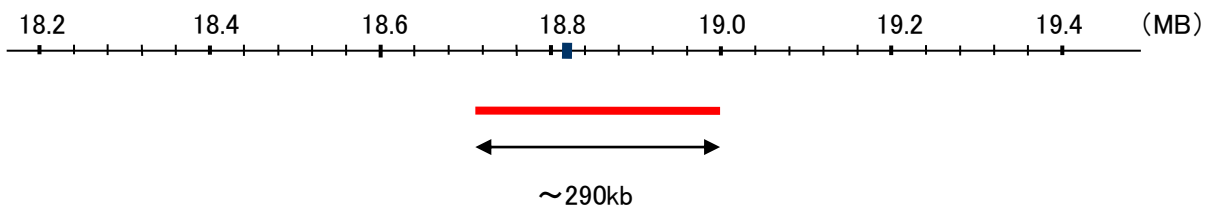


Probe KLHDC7A/CEN1p Dual Color FISH Probe
Product No. GC076

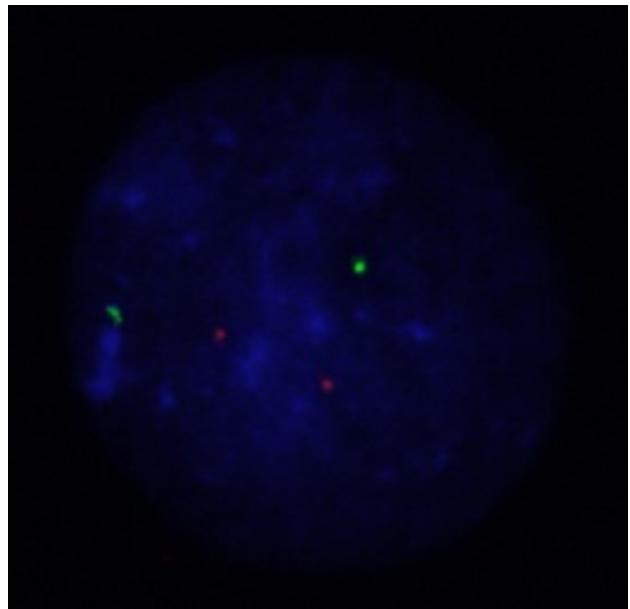
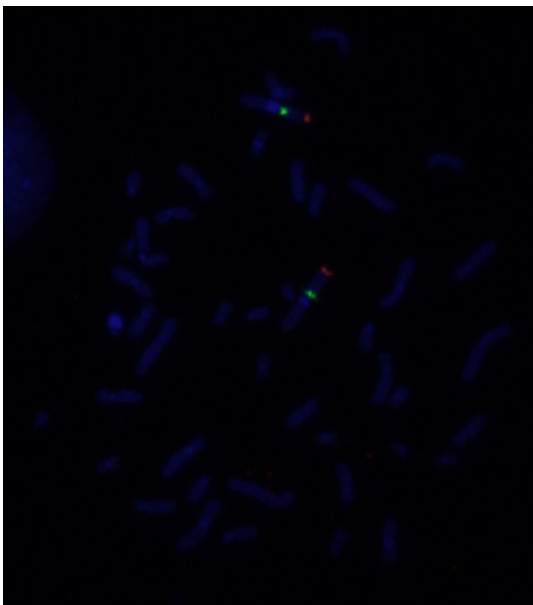
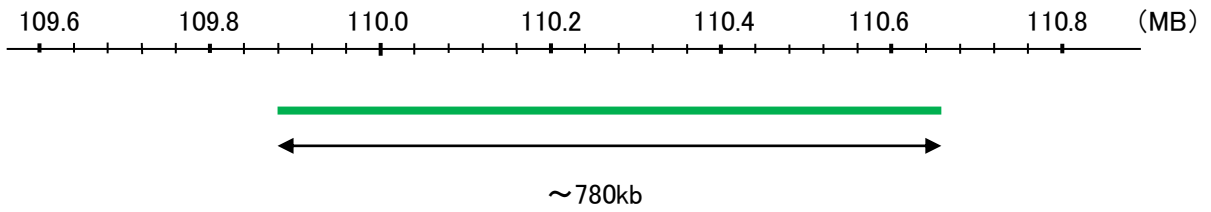
KLHDC7A
Probe Size Approximately 290kb
Fluorophore TexRed
Location 1p36.13

CEN1p
Probe Size Approximately 780kb
Fluorophore FITC
Location 1p13.3

KLHDC7A



CEN1p



Representative images of normal human cell (lymphocyte) stain with the dual color FISH probe. The left image is chromosomes at metaphase, and the right image is an interphase nucleus.