

Probe PIK3CA/CEN3q Dual Color FISH Probe
Product No. GC077

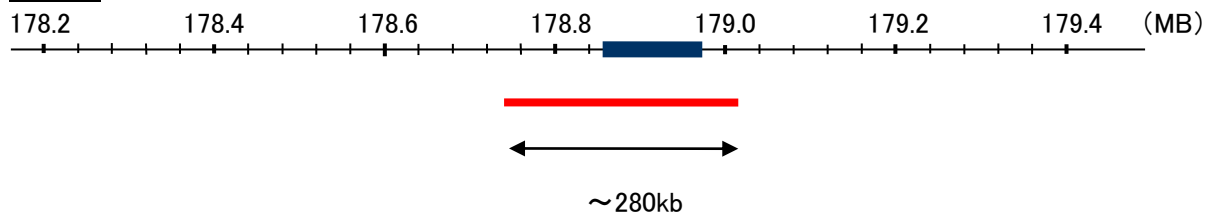
PIK3CA

Probe Size Approximately 280kb
Fluorophore TexRed
Location 3q26.32
Also known as MCM; CWS5; MCAP; PI3K; CLOVE; MCMTC; p110-alpha

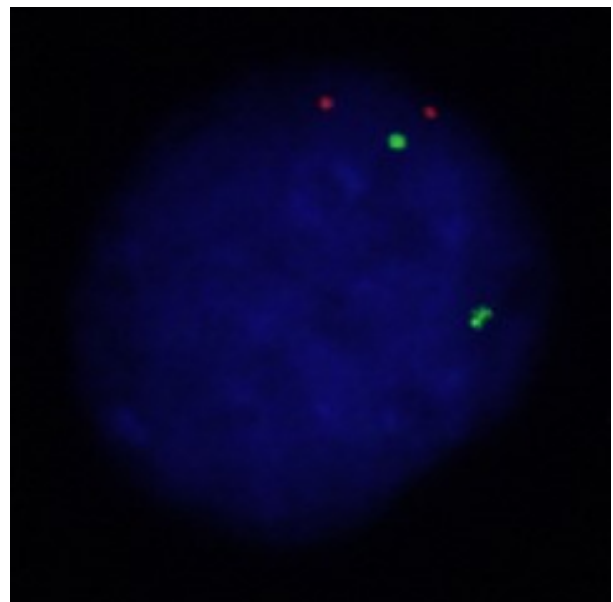
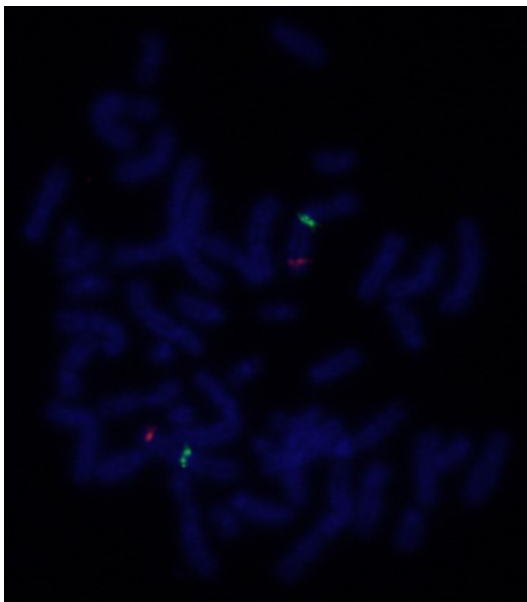
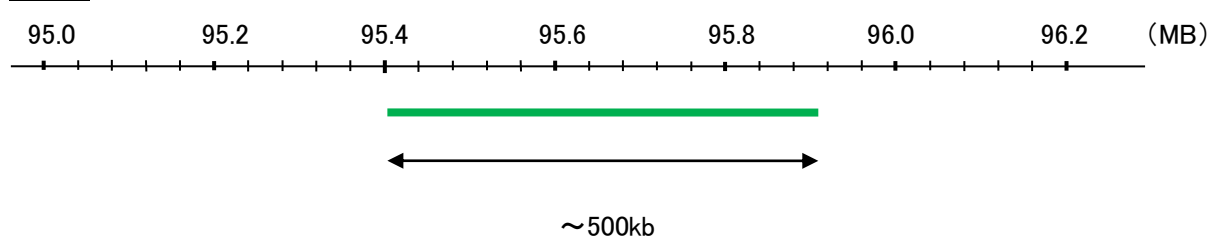
CEN3q

Probe Size Approximately 500kb
Fluorophore FITC
Location 3q12.1

PIK3CA



CEN3q



Representative images of normal human cell (lymphocyte) stain with the dual color FISH probe. The left image is chromosomes at metaphase, and the right image is an interphase nucleus.