

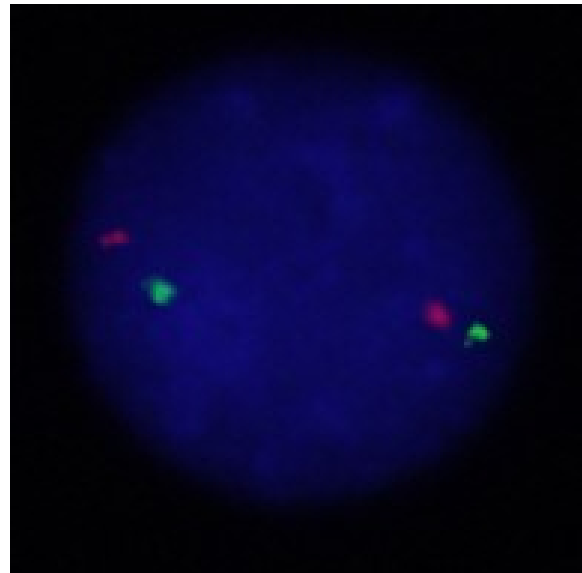
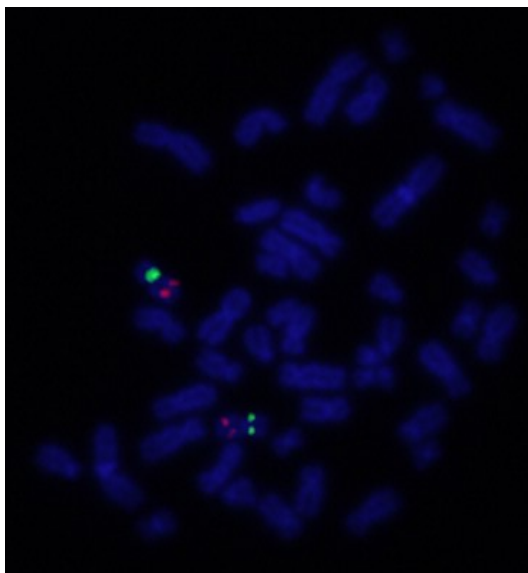
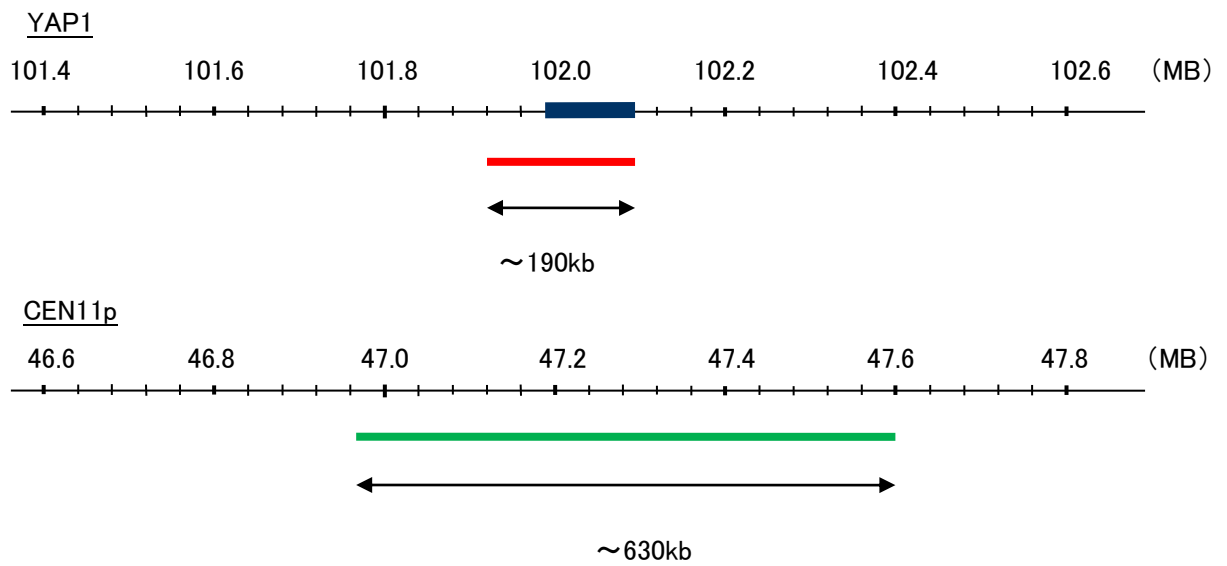
Probe YAP1/CEN11p Dual Color FISH Probe
Product No. GC080

YAP1

Probe Size Approximately 190kb
Fluorophore TexRed
Location 11q22.1-q22.2
Also known as YAP; YKI; COB1; YAP2; YAP65

CEN11p

Probe Size Approximately 630kb
Fluorophore FITC
Location 11p11.12



Representative images of normal human cell (lymphocyte) stain with the dual color FISH probe. The left image is chromosomes at metaphase, and the right image is an interphase nucleus.