

Probe AMY/CEN1q Dual Color FISH Probe
Product No. GC081

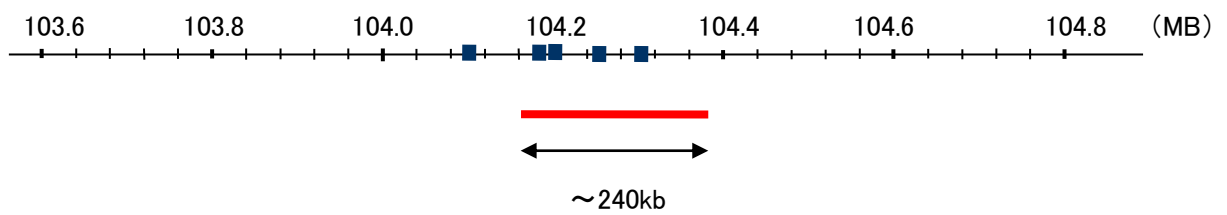
AMY

Probe Size Approximately 240kb
Fluorophore TexRed
Location 1p21.1

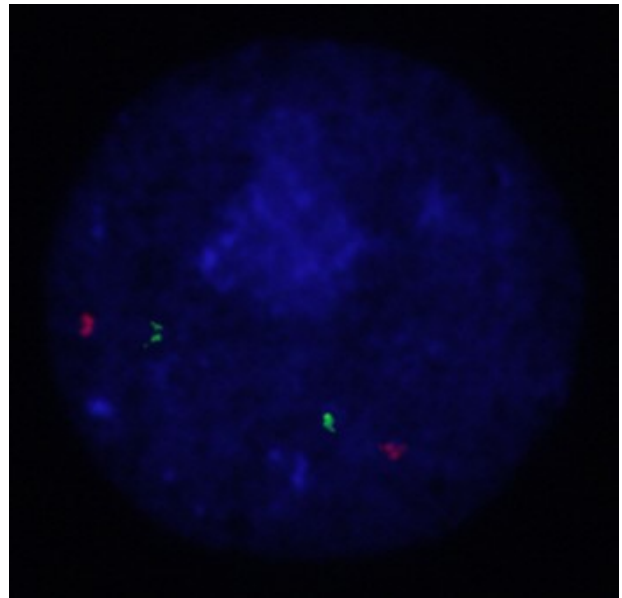
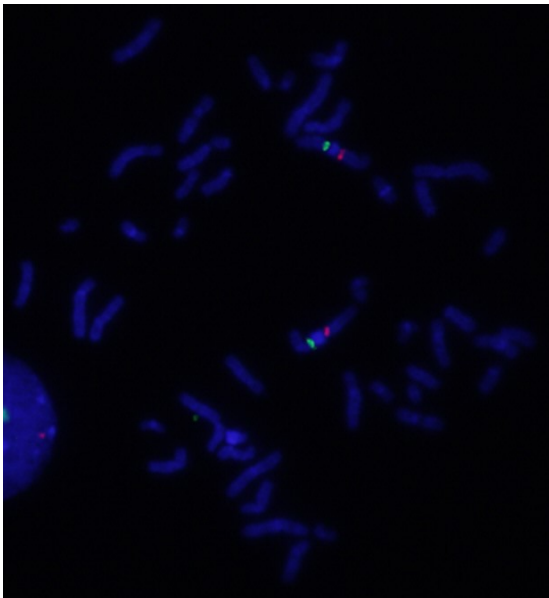
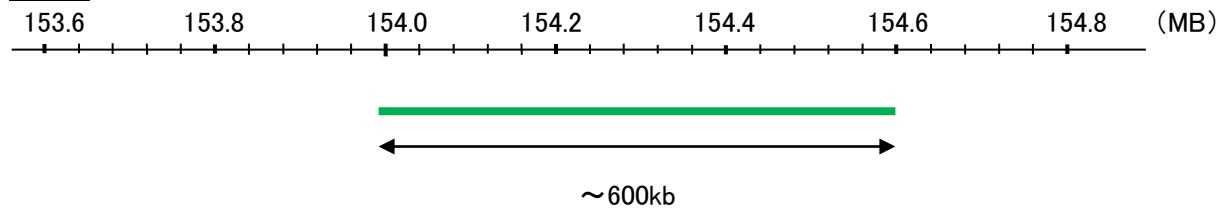
CEN1q

Probe Size Approximately 600kb
Fluorophore FITC
Location 1q21.3

AMY



CEN1q



Representative images of normal human cell (lymphocyte) stain with the dual color FISH probe. The left image is chromosomes at metaphase, and the right image is an interphase nucleus.