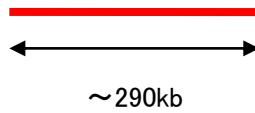


Probe Nestin/CEN1p Dual Color FISH Probe  
Product No. GC083

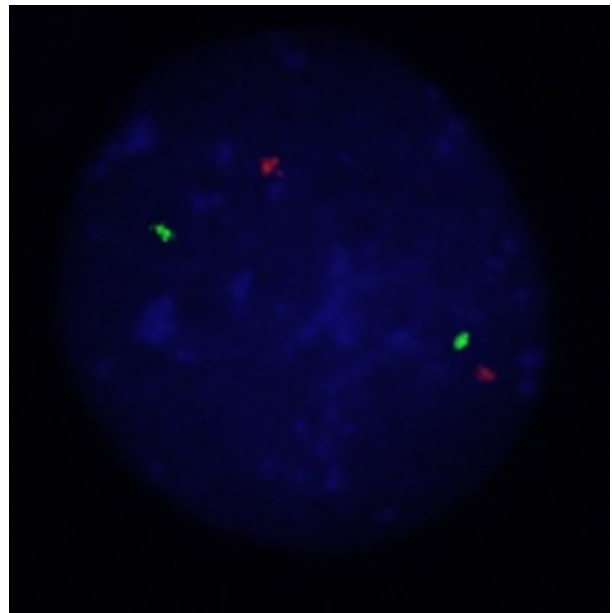
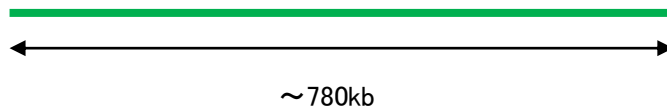
Nestine  
Probe Size Approximately 290kb  
Fluorophore TexRed  
Location 1q23.1  
Also known as NES; Nbla00170

CEN1p  
Probe Size Approximately 780kb  
Fluorophore FITC  
Location 1p13.3

Nestine  
156.0 156.2 156.4 156.6 156.8 157.0 157.2 (MB)



CEN1p  
109.6 109.8 110.0 110.2 110.4 110.6 110.8 (MB)



Representative images of normal human cell (lymphocyte) stain with the dual color FISH probe. The left image is chromosomes at metaphase, and the right image is an interphase nucleus.