

Probe CYP2D6/CEN22q Dual Color FISH Probe
Product No. GC085

CYP2D6

Probe Size Approximately 130kb

Fluorophore TexRed

Location 22q13.2

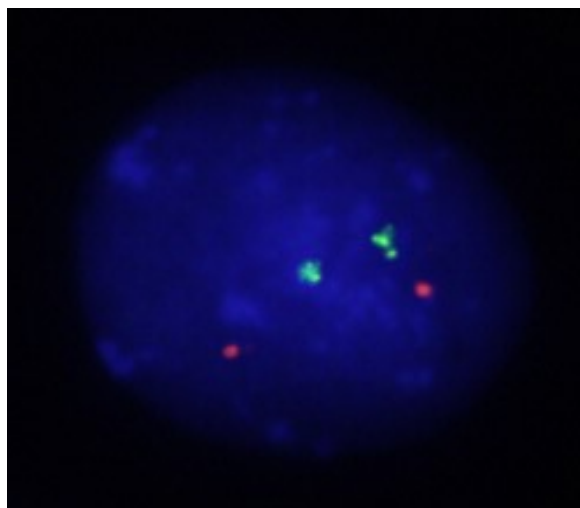
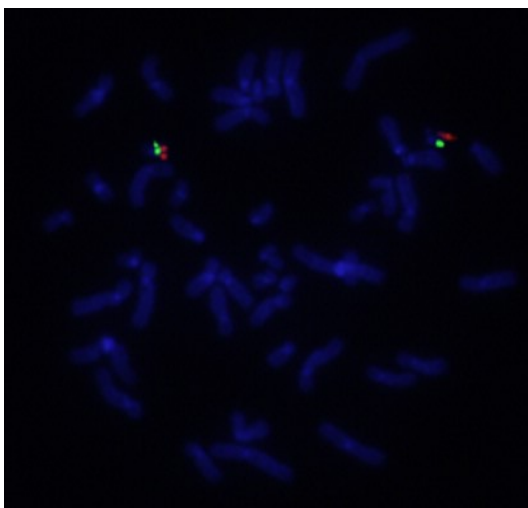
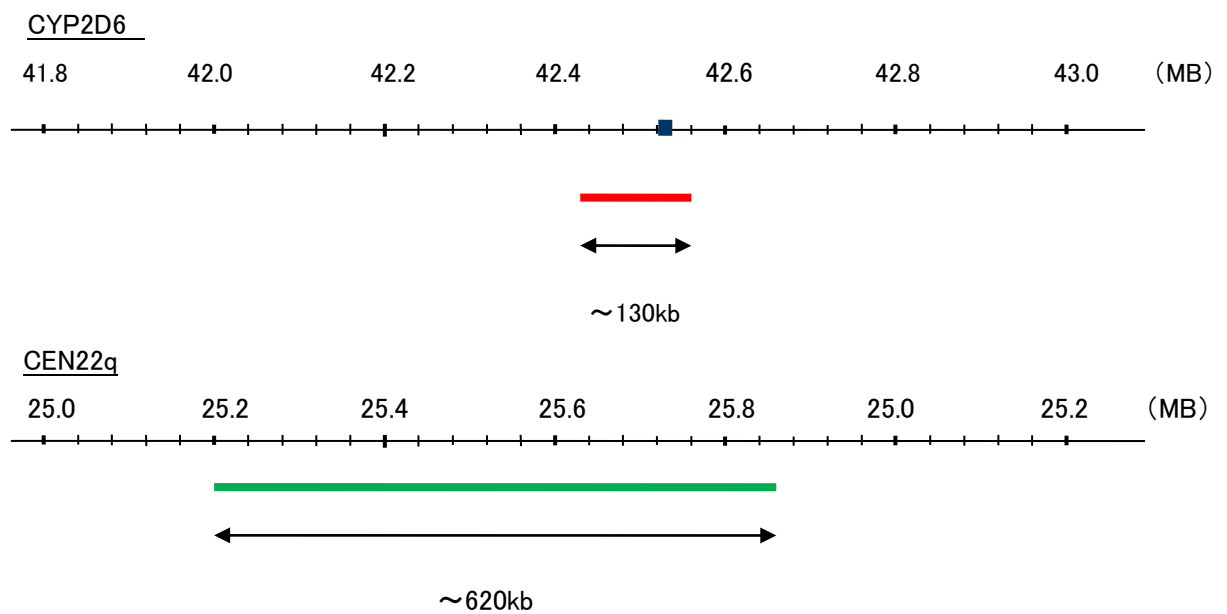
Also known as CPD6; CYP2D; CYP2DL1; CYP2D6; P450C2D; P450DB1; CYP2D7AP; CYP2D7BP; CYP2D7P2; CYP2D8P2; P450-DB1

CEN22q

Probe Size Approximately 620kb

Fluorophore FITC

Location 22q11.22



Representative images of normal human cell (lymphocyte) stain with the dual color FISH probe. The left image is chromosomes at metaphase, and the right image is an interphase nucleus.