

Probe                   MODY1/CEN20q Dual Color FISH Probe  
Product No.           GC086

**PTPRT**

Probe Size            Approximately 400kb

Fluorophore          TexRed

Location             20q13.12

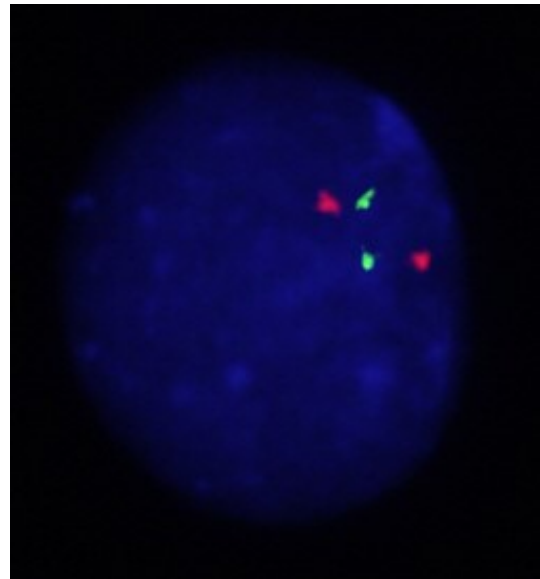
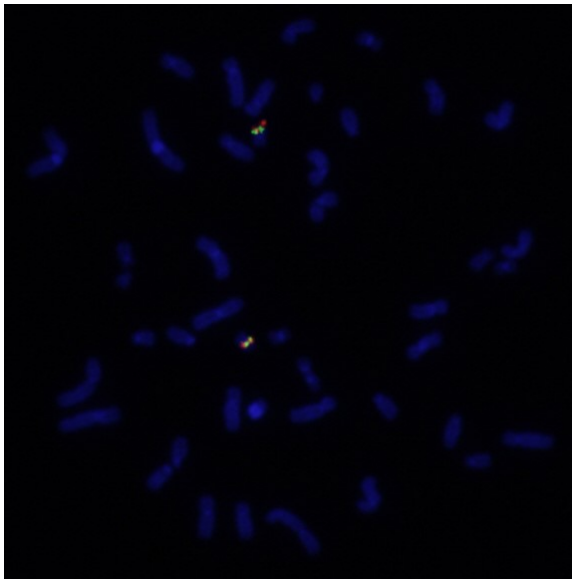
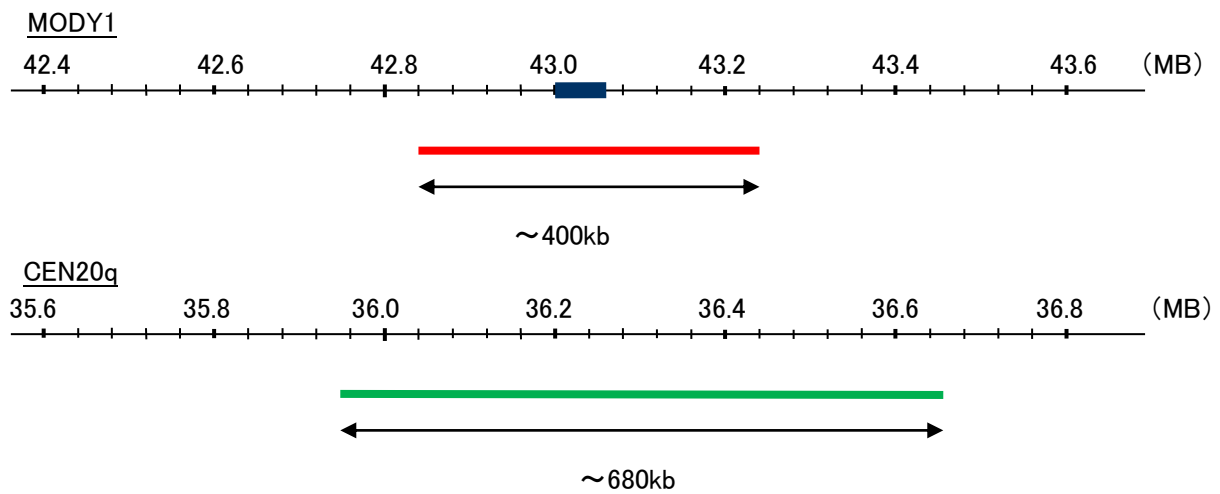
Also known as        TCF; HNF4; MODY; FRTS4; MODY1; NR2A1; TCF14; HNF4a7; HNF4a8; HNF4a9; NR2A21; HNF4alpha

**CEN20q**

Probe Size            Approximately 680kb

Fluorophore          FITC

Location             20q11.22



Representative images of normal human cell (lymphocyte) stain with the dual color FISH probe. The left image is chromosomes at metaphase, and the right image is an interphase nucleus.