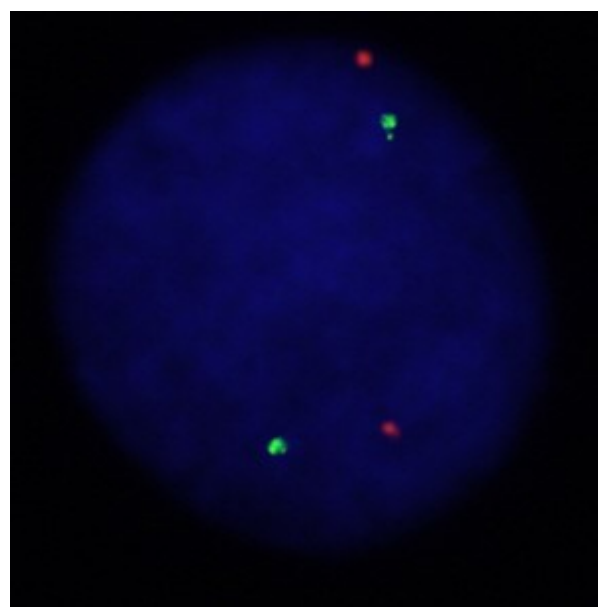
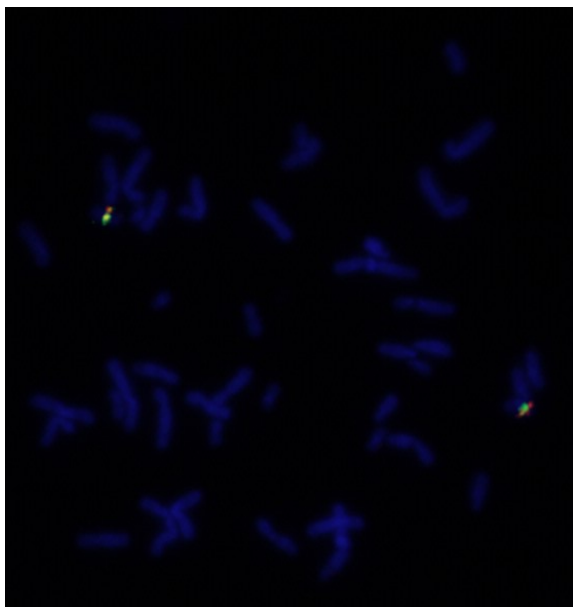
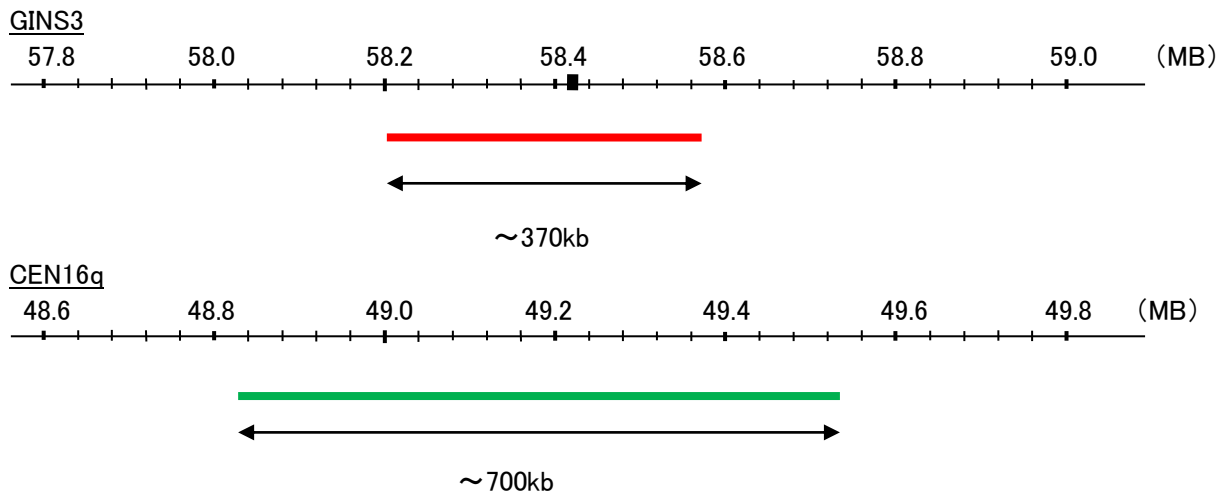


Probe GINS3/CEN16q Dual Color FISH Probe  
Product No. GC087

**GINS3**  
Probe Size Approximately 370kb  
Fluorophore TexRed  
Location 16q21  
Also known as PSF3

**CEN16q**  
Probe Size Approximately 700kb  
Fluorophore FITC  
Location 16q12.1



Representative images of normal human cell (lymphocyte) stain with the dual color FISH probe. The left image is chromosomes at metaphase, and the right image is an interphase nucleus.