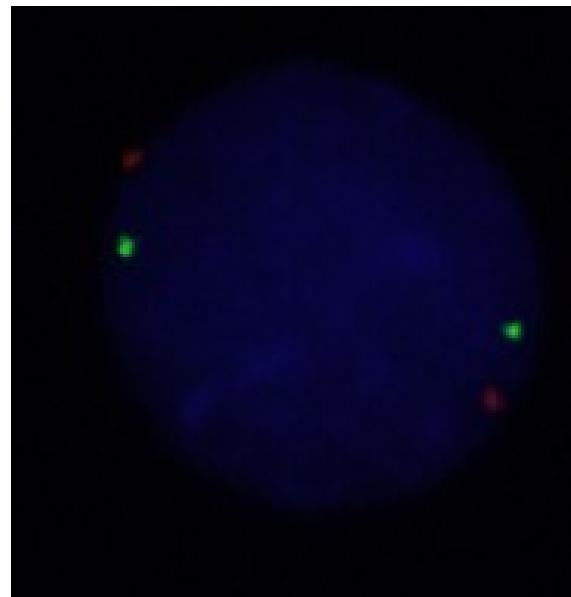
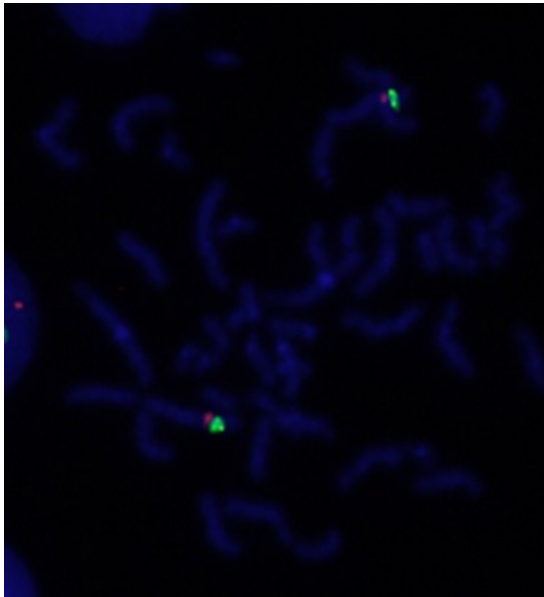
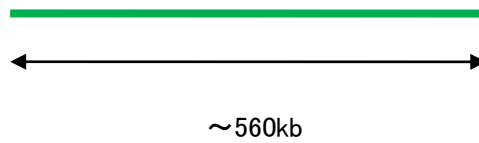
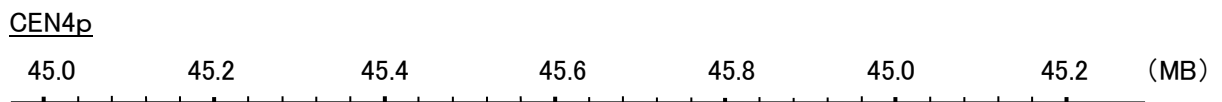
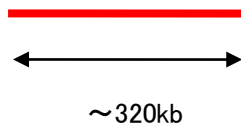
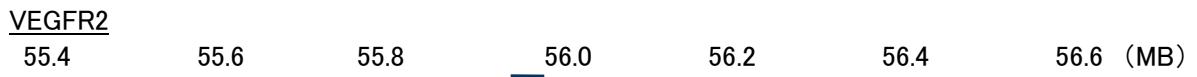


Probe VEGFR2/CEN4p Dual Color FISH Probe
Product No. GC090

VEGFR2
Probe Size Approximately 320kb
Fluorophore TexRed
Location 4q12
Also known as FLK1; CD309; VEGFR; KDR

CEN4p
Probe Size Approximately 560kb
Fluorophore FITC
Location 4p13



Representative images of normal human cell (lymphocyte) stain with the dual color FISH probe. The left image is chromosomes at metaphase, and the right image is an interphase nucleus.