

Probe MER/CEN2q Dual Color FISH Probe  
Product No. GC094

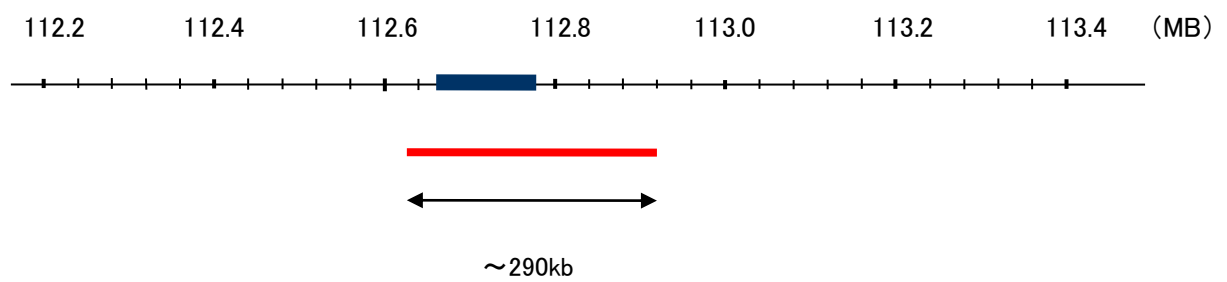
**MER**

Probe Size Approximately 290kb  
Fluorophore TexRed  
Location 2q13  
Also known as MER; RP38; c-Eyk; c-mer; Tyro12

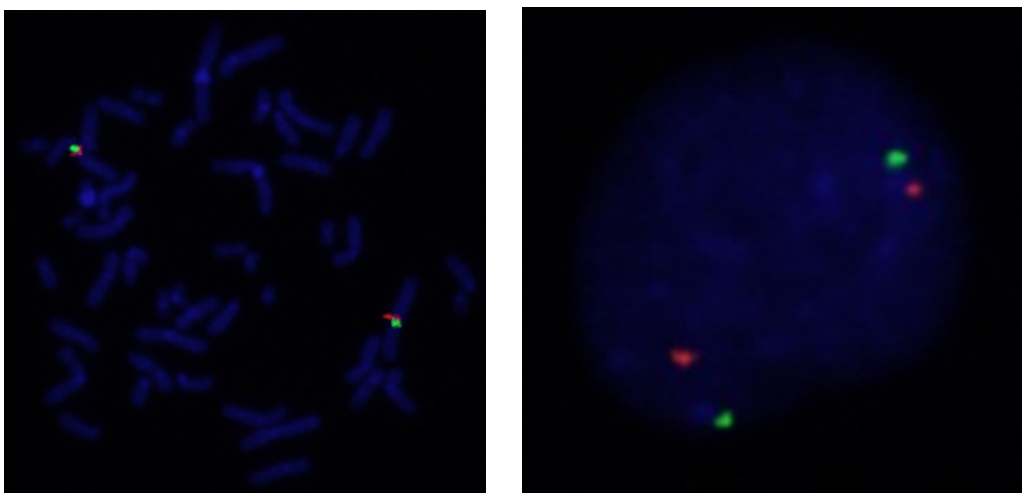
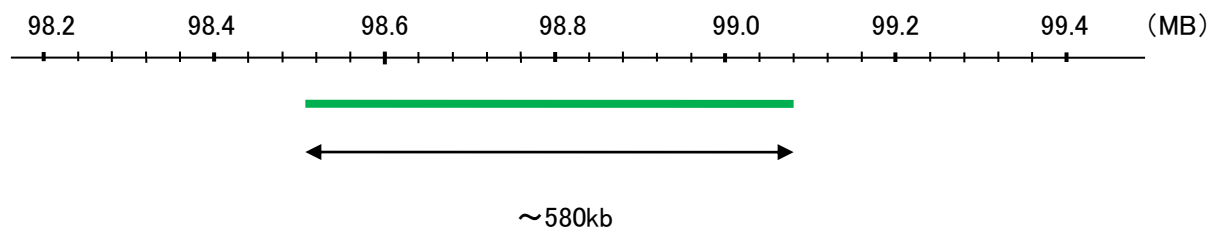
**CEN2q**

Probe Size Approximately 580kb  
Fluorophore FITC  
Location 2q11.2

MER



CEN2q



Representative images of normal human cell (lymphocyte) stain with the dual color FISH probe. The left image is chromosomes at metaphase, and the right image is an interphase nucleus.