

Probe ECT2/GEN3q Dual Color FISH Probe  
Product No. GC096

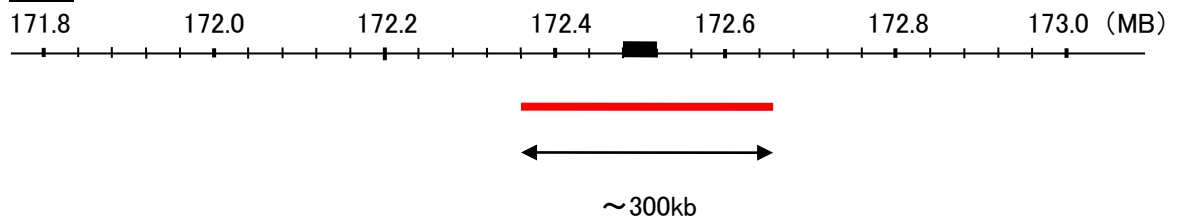
**ECT2**

Probe Size Approximately 300kb  
Fluorophore TexRed  
Location 3q26.1-26.2  
Also known as ARHGEF31

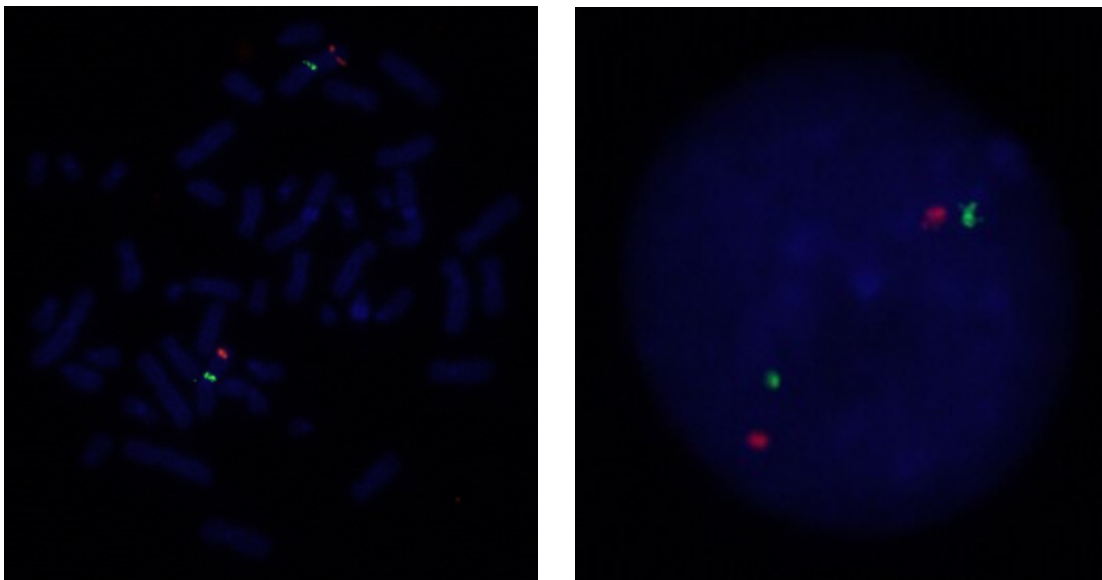
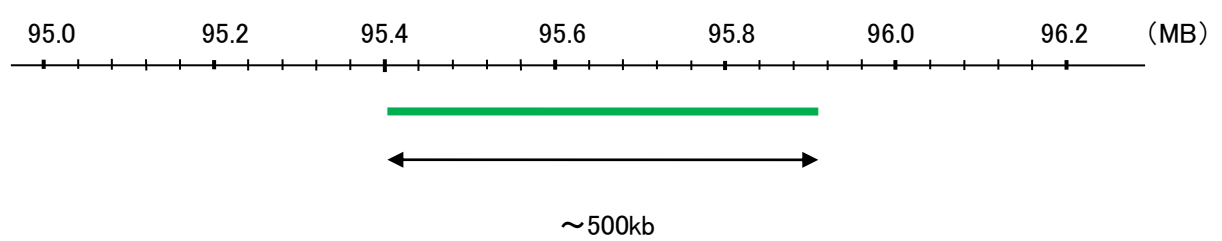
**GEN3q**

Probe Size Approximately 500kb  
Fluorophore FITC  
Location 3q12.1

ECT2



GEN3q



Representative images of normal human cell (lymphocyte) stain with the dual color FISH probe. The left image is chromosomes at metaphase, and the right image is an interphase nucleus.